

Bringing the vision to life

Huntlee Community Plan

September 2025

Huntlee



Contents

- 04** Foreword
- 05** Our Huntlee Community Plan
- 06** Huntlee Community Pillars
- 08** Responding to Community Needs,
Today & Tomorrow
- 11** Planning for Growth
- 12** People
Being Connected, Active & Healthy
- 16** Environment
Enhancing the Natural Environment
- 20** Economy
Creating Local Employment & Business Opportunities
- 24** Innovation
The Best in Contemporary Living
- 28** What's Next?

Foreword

In a thriving community, there exists a shared vision – a collective dream of a brighter, more prosperous, and harmonious future. The Huntlee Community Plan is the embodiment of LWP Group’s continued commitment to turning that dream into reality.

Building on the previous foundations set by the first Huntlee Community Plan, LWP Group outline our updated vision for the Huntlee community.

We see a place where:

- Every resident, regardless of background, continues to thrive and find opportunities.
- Our environment is cherished and protected, ensuring the beauty and health of our surroundings.
- Our public spaces are inviting, safe, and promote a sense of togetherness.
- Innovation and progress are embraced while respecting our cultural heritage.

Achieving this vision will not be easy, nor will it happen overnight. It will require the dedication, passion, and cooperation of every member of the Huntlee community. It’s about our shared commitment to transform this vision into a reality.

The Huntlee Community Team



Huntlee District Park



Katherines Landing



Huntlee Fitness

Our Huntlee Community Plan

Our Huntlee Community Plan is a collaborative framework designed to foster a vibrant and connected community.

Recognising the role that LWP Group and the Huntlee community each play in achieving this vision, our plan is the shared roadmap to building a healthy, vibrant, and inclusive community. Informed by the needs of those who make up the Huntlee community, feedback we have received from businesses and residents, and the vision that they have for the future of this place; our plan is built on Four Pillars.

These pillars create a structure within which LWP Group can partner with the community to develop strategies and actions to create a great place to live. Each pillar will be equally important to the wellbeing of the Huntlee community and is designed to be as relevant today as it will be in 20 years' time at the completion of development and for many years after.

Accompanying each pillar are several strategies and actions which will pave the way for Huntlee's future growth and development.

Delivering on each pillar will be achieved through the commitment of the project developer, LWP Group, but equally through strategic partnerships with key service providers, including the Cessnock and Singleton Councils, State Government, not-for-profit groups, and the business sector.



LWP Group

LWP Group is an award winning developer responsible for some of Australia's largest masterplanned communities. It is proud to be developing Huntlee and is committed to bringing communities to life by creating better places for people to live, work and play.



Huntlee Community Pillars



PEOPLE

**Being Connected,
Active & Healthy**

The people of Huntlee enjoy a great quality of life. Easy access to community facilities and services, provides a diverse range of opportunities to connect with one another, stay fit and healthy, and enjoy a culturally rich lifestyle.

Some of the ways LWP Group will deliver:

- Create a sense of vitality through a well-resourced community events program and support of existing/new community groups and initiatives.
- Deliver an intimate village structure and proximity to the town centre to create walkable neighbourhoods.
- Plan, stage and deliver facilities and services to be commensurate with population growth.

Ways the Huntlee Community can get involved:

- Become a local volunteer.
- Utilise local facilities and services.
- Join one of the many community groups established within Huntlee.
- Be proud of your town and your street.
- Connect with your neighbour.
- Participate and support local events.



ENVIRONMENT

**Enhancing the
Natural Environment**

The people of Huntlee benefit from connection to nature. By retaining generous natural habitats and incorporating the riparian corridor into the masterplan, people of Huntlee leverage the benefits of nature to improve their own wellbeing.

Some of the ways LWP Group will deliver:

- Incorporate natural creek lines and riparian vegetation into the master-plan design and the more detailed designs for each village/town centre.
- Create signature tree-lined streets to be a defining feature of Huntlee to create beautiful shady environments for walking/cycling and alleviate urban heat effects.
- Provide street trees and quality streetscapes to deliver welcoming and comfortable streets.
- Deliver education programs to the community that encourage understanding and participation in the conservation of the natural environment.

Ways the Huntlee Community can get involved:

- Continue to reduce, reuse, and recycle to minimise waste to landfill.
- Take ownership of our natural environment and protect it through responsible practices.
- Control invasive plant and animal species on private properties.
- Support and participate in community environmental programs and initiatives.

A community and its culture matter. By seeking out and adopting the best practices in urban development, LWP Group aims to set a new standard in sustainable housing that will breathe new life into Huntlee and create a place with a heart and soul, where people feel they belong.



ECONOMY

Creating Local Employment
& Business Opportunities

Huntlee will provide significant economic stimulus for the region. Following the projected investment of \$1.5 Billion over the 20-year construction timeframe, LWP Group delivers a thriving retail precinct that responds to local resident's needs and creates local jobs.

Some of the ways LWP Group will deliver:

- Continue to develop Wine Country Drive into a four-lane boulevard to provide faster access to other locations and complement key transport connections.
- Investigate opportunities to support and develop desirable business types for key retail tenancies, such as independent local retailers like Hunter region wine/food producers, small bars, and similar ventures.
- Promote the construction of mixed-use dwellings within the Town Centre and Caphilly precincts.

Ways the Huntlee Community can get involved:

- Shop locally to support our local economy.
- Look for local job opportunities.
- Support the local Huntlee Business Owners Group.



INNOVATION

The Best in
Contemporary Living

Huntlee is an exemplar of 21st century living. The high quality of living, sustainability outcomes, and on-going economic benefit are the result of embracing emerging best practice in technological innovation, alternative energy sources, water conservation, transport and waste recycling.

Some of the ways LWP Group will deliver:

- Investment in research and development to establish Huntlee as a premier development in efficient and sustainable utility service provision.
- Ensure smart wiring is available to all homes to enable free-to-air TV, telephone, and internet.
- Establishment of Altogether Group to deliver a sustainable water network.
- Diversity in housing to be provided in each of the villages and town centre, proving suitable options for all demographic and income groups.

Ways the Huntlee Community can get involved:

- Utilise available recycled water systems and invest in personal solar power for your homes.
- Make use of available public transportation services within our district.
- Walk to town.

Responding to Community Needs, Today & Tomorrow

Successful community development begins with an understanding of the community's needs, strengths, and challenges today, as well as their vision for the future.



Huntlee District Park

In preparing this Community Plan, LWP Group has undertaken a demographic analysis of our current and future community to understand how Huntlee can become a place that responds to residents' needs. Further consultation with Huntlee residents as well as surrounding districts, Councils, and community groups has helped us shape initiatives, programs and actions that are uniquely Huntlee, and leverage our assets and strengths.

Understanding who the community is, and listening to their needs is the foundation for developing a best practice Community Plan that really improves the wellbeing of the community.



Huntlee Shopping Centre

Responding to our demographic trends.

The Huntlee community is unique, and this Community Plan needs to respond to the needs and life milestones of our residents.

More than 80% of households are families

Huntlee is an attractive place for families to put down roots alongside younger and older residents.

A community for everyone

People of all ages call Huntlee home, with a diverse community that embraces everyone from newborns to retirees.

62% full time & 24.9% part time workers

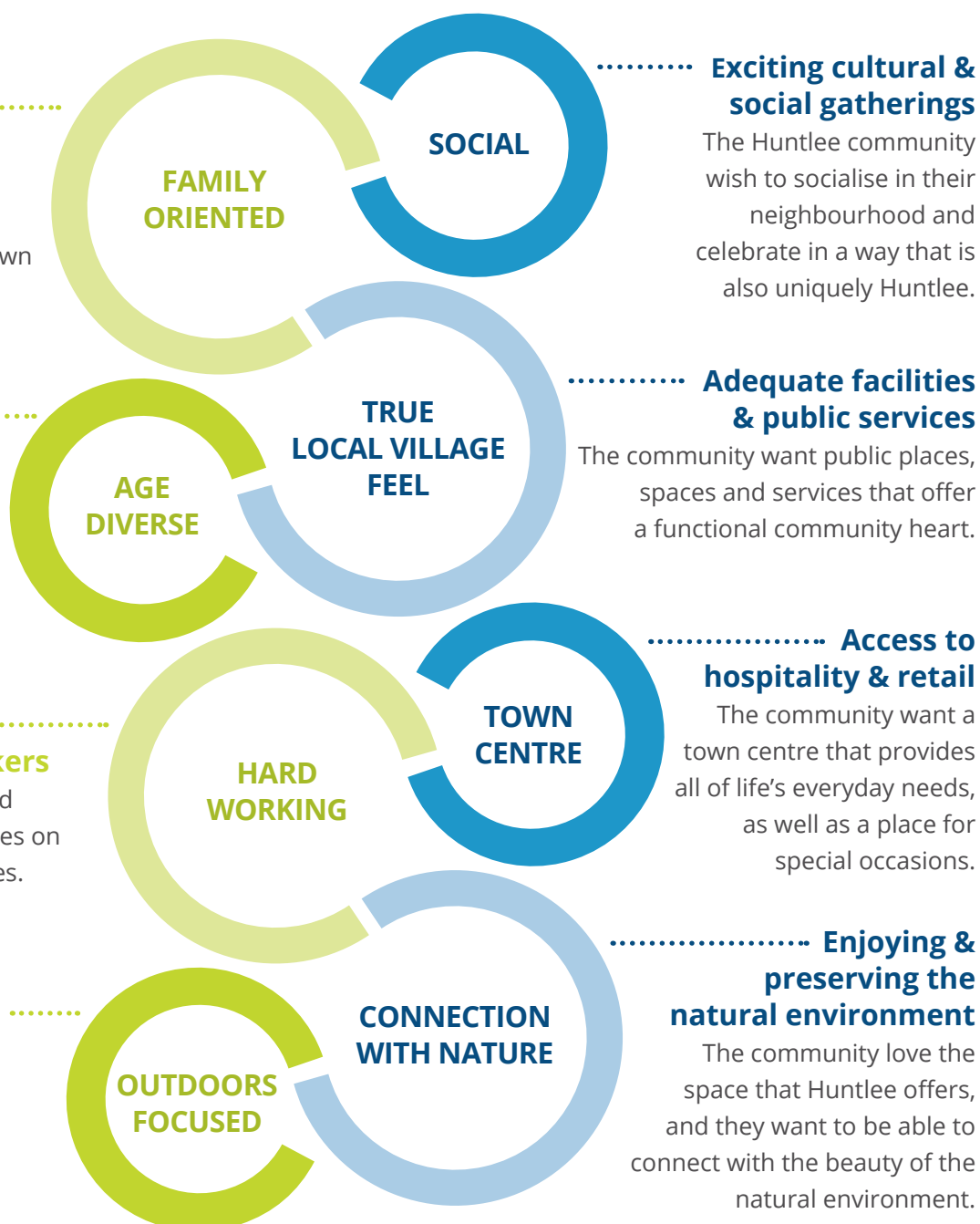
Huntlee is not afraid of hard work, and we pride ourselves on growing emerging industries.

260Ha of open space

Huntlee loves an opportunity to get outside and connect with nature, it is a part of our identity.

Delivering on what we've heard is important.

On-going surveys provide a clear understanding of the community's priorities for the future of Huntlee.





Planning for Growth

As Huntlee begins to welcome future villages into the established community, strategic planning becomes the cornerstone of our collective vision for growth.

Our Community Plan aims to ensure our diverse and growing community seamlessly integrate, regardless of how long a resident has called Huntlee home. Therefore, it's important we make considerations for the needs and aspirations of new members, who will become integral part of our community tapestry. This involves envisioning new spaces for social interaction, creating avenues for skill-sharing and collaboration, and fortifying support systems that can accommodate the evolving needs of a growing and dynamic population.

In essence, our planning for growth is a collective commitment to crafting a future that is not only bigger in scale but richer in diversity and mutual support. Strategic foresight encompasses a steadfast dedication to our community ethos as we pave the way for an exciting chapter of expansion, unity, and shared success.

Aspect of Integration	New Community	Established Community
Introduction	Welcome events and community meetings.	Openness to newcomers, willingness to welcome and include.
Communication	Establishment of communication channels (e.g., forums, social media groups).	Encouraging communication, reaching out to new members.
Collaborative Projects	Joint initiatives, community projects.	Involvement and support for joint efforts.
Social Activities	Inclusive social events, gatherings, mixers.	Inviting newcomers to existing social circles, creating opportunities for interaction.
Cultural Exchange	Cultural events and workshops. Share cultural awareness with new community members.	Openness to learn about and appreciate diverse cultures.

PEOPLE

Being Connected, Active & Healthy

Goal

The residents of Huntlee enjoy the benefits of a healthy attitude towards life, work and play. They are able to connect with one another, have opportunities to stay fit and healthy, enjoy a culturally rich lifestyle, and have access to community facilities and services.

- ACTIVE ACTIONS
- FUTURE ACTIONS



Christmas in Huntlee

Strategy

1 Residents experience a genuine connection to Huntlee and their community.

2 Diversity is embraced and promoted as a foundation of the Huntlee community.

Actions

Huntlee to continue to foster a sense of vitality through a well-resourced community events program.

Provide diverse opportunities for people to meet and interact including local cafe's, bars and restaurants, local parks and public spaces.

Support networks, programs and facilities which promote health and wellbeing and encourage healthy lifestyles.

Community Liaison Officer to oversee implementation of this plan and to facilitate and coordinate community-based initiatives.

Huntlee to develop a strategy that will focus on connecting the new community members with the existing residents.

The site's indigenous and industry heritage, mining, agricultural and viticulture history to be recognised and celebrated by weaving these elements into the design fabric of the town centre and three villages.

Funding allocated for existing/new community groups and initiating new grass-roots cultural programs.

Ongoing consultation to occur with Aboriginal stakeholder groups primarily through the Huntlee Aboriginal Reference Group (HARG).

Establish a cultural foundation to encourage arts-based culture across a range of platforms.



3

An active and healthy lifestyle is intrinsic to the Huntlee way of life.

4

People feel welcome through well-designed built and natural environments.

5

Community facilities and infrastructure respond to community needs.

Deliver an intimate village structure and proximity of the town centre to create walkable neighbourhoods.

Deliver over 40km of pedestrian paths and cycleways to create walkable neighbourhoods.

Street network, lane ways, and passages/paths to be highly interconnected to provide pedestrians/cyclists with alternative routes to all destinations.

A wide range of accessible parks, playing fields, courts, and walking trails to be provided.

Landmarks and way-finding signage to be provided to create a legible environment for pedestrians/cyclists.

Street trees and quality streetscapes to deliver welcoming and comfortable streets.

Deliver well designed street and public spaces to ensure residents feel safe and welcome.

Safety will be facilitated by designing spaces for maximum use/activity through provision of extensive lighting and by creating opportunities for passive surveillance from adjacent building.

Future design to also consider CPTED (crime prevention through environmental design).

Maintain the public realm over the full duration of the maintenance period (well-maintained and designed spaces are less susceptible to anti-social behaviour and vandalism).

Support community members in maintaining neighbourhood safety and encourage correct reporting of safety concerns to local authorities.

Planning, staging and delivery of facilities and services to be commensurate with population growth.

Ongoing community engagement surveys for real time monitoring of community demographics so LWP Group can plan and deliver on community need.

PEOPLE

Being Connected, Active & Healthy



Huntlee District Park Grand Opening 2022

How can you get involved?

- Become a local volunteer.
- Utilise local facilities and services.
- Join one of the many community groups established within Huntlee.
- Be proud of your town and your street.
- Report safety and maintenance issues at local parks, facilities and playgroups to Huntlee or relevant council via the Snap Send Solve App.
- Respect the heritage and culture of others.
- Embrace a healthy lifestyle and get involved in local sporting and physical activities.
- Initiate a gathering within the community.
- Get to know your neighbours.
- Participate in community events.



What does success look like?

- A growing sense of safety and security in our community
- An increase in the number of Huntlee residents participating in community events, volunteering, and activities.
- Enhancing community access to services and facilities that support everyone's needs
- Improved playground and recreational facilities.
- Huntlee community gather annually around events delivered by community groups and committees.
- Establishment of local Huntlee sporting clubs.



Huntlee Easter Fair

Huntlee Easter Fair Success Story

Starting in 2019 as a small initiative led by two passionate Huntlee residents with support from the Huntlee Community Liaison Officer, the Huntlee Easter Fair has grown into one of the community's most anticipated annual events.

Today, the fair draws over 1,000 attendees, showcases more than 50 lively market stalls, and benefits from the generous support of local business sponsors. It stands as a true testament to community spirit, collaboration, and the incredible potential of grassroots ideas to flourish into something extraordinary.

ENVIRONMENT

Enhancing the Natural Environment

Goal

The people of Huntlee benefit from a connection to nature. By retaining generous natural habitats and incorporating the riparian corridor into the masterplan, people of Huntlee leverage the benefits of nature to improve their own wellbeing.

- ACHIEVED ACTIONS
- ACTIVE ACTIONS
- FUTURE ACTIONS

Strategy

1 Local flora and fauna are protected where possible.

Actions

803ha of Huntlee site to be set aside for conservation and a further 4,988ha of land in the Hunter region transferred to the State Government to enhance the region's green corridors and forest areas.

Deliver a 17ha Persoonia Park to be created for the conservation of Persoonia Pauciflora – an endangered species.

Furthermore, Huntlee has: Continued to collaborate with the Department of Environment, Climate Change and Water (DECCW) on propagation of the Persoonia Pauciflora.

Prepare and implement a detailed management plan for conservation areas and reserves within Huntlee, together with ongoing education programs, delivered in partnership with key government agencies.

As much existing flora will be retained throughout the open space networks as possible with an emphasis on retaining and re-introducing local endemic species.

When safe to retain existing hollow bearing trees to encourage fauna they will be included within open space designs.

Selection of new plants for the open space areas will give consideration to the benefits provided for fauna.



Huntlee National Tree Planting Day 2023



2

Natural creek lines and associated riparian vegetation are retained.

3

Landscapes and built form complement the natural qualities of Huntlee.

4

The community play a vital role in the protection and management of the natural environment.

Natural creek lines to be rehabilitated in accordance with the Creek Rehabilitation Management Plan.

Black Creek to be rehabilitated in accordance with the Creek Rehabilitation Management Plan.

Flood and stormwater management in Anvil Creek to be improved by creating a stormwater detention and wetland area along the eastern side of Wine Country Drive.

Front landscaping to be provided with every lot sold to assist landowners in establishing front gardens. Landscaping will consider sustainable design practices through the incorporation of endemic, native and drought resistant plant varieties.

Huntlee Design Guidelines have been created to ensure that design concepts are tailored to the local climate, prioritising comfort through design rather than relying on mechanical heating and cooling. This approach will reduce utility costs and provide long-term environmental benefits.

Significant trees retained as part of the development, where possible.

Signature tree-lined streets to be a defining feature of Huntlee to create beautiful shady environments for walking/cycling and alleviate the urban heat effect.

Education programs and events to be extended to the community that encourage understanding and participation in conservation of the natural environment.

Provide support to local community – based environmental groups established to care for bushland and other environmental areas.

ENVIRONMENT

Enhancing the Natural Environment

How can you get involved?

- Continue to reduce, reuse and recycle to minimise waste to landfill.
- Take ownership of our natural environment and protect it through responsible practices.
- Control invasive plant and animal species on private properties.
- Support and participate in community environmental programs and initiatives.
- Apply sustainable water practices by utilising recycled water for irrigation, external cleaning, laundry, and toileting facilities to reduce the strain on our natural water storage resources.
- Keep our waterways clean.
- Educate each other on environmentally sustainable living practices to reduce our environmental footprint.
- Dispose of rubbish properly, do not litter in streets and other public places.
- Dispose of hazardous waste in approved locations.
- Take care of your street trees and verge area.



Persoonia Lanceolata

Persoonia Park Success Story

The creation of the 17-hectare Persoonia Park is a proud achievement for Huntlee and a significant milestone in local conservation efforts. Developed to protect Persoonia Pauciflora, a critically endangered native plant species, the park is a testament to Huntlee's commitment to preserving biodiversity.

This initiative not only safeguards vital habitat but also provides valuable opportunities for environmental education and research. Through thoughtful planning and stewardship, Huntlee has demonstrated how sustainable development and conservation can work hand in hand - ensuring this unique species continues to thrive for generations to come.



Landscaped swale in Katherine's Landing

What does success look like?

- A reduction in Huntlee waste reaching landfill.
- An increase in the use of recycled water.
- Improved standards of water quality in our waterways.
- An increase in the use of alternative energy sources.
- Community re-use and recycle programs create a local circular economy.
- Local businesses collaborate to source local suppliers and minimise environmental impact.
- Community lead gardening initiatives emphasise sustainability and increased biodiversity.

ECONOMY

Creating Local Employment & Business Opportunities

Goal

Huntlee provides significant economic stimulus for the region. Following the projected investment of \$1.5 billion over the 20-year construction timeframe, LWP Group delivers a thriving retail precinct that responds to local resident's needs and creates local jobs.

-
- ACHIEVED ACTIONS
 - ACTIVE ACTIONS
 - FUTURE ACTIONS

Strategy

1

Significant local job creation in the town centre, neighbourhood village and during the construction phase.

Actions

Deliver a mixed-use town centre to be the focus for business investment, economic development and job creation (71ha of land allocated, estimated 3,000 jobs.)

Deliver over \$1.5 billion in investment over the 20-year construction timeframe contributing to significant economic stimulus for the region.

Huntlee Academy to coordinate the training of local people to be job-ready for employment opportunities generated by Huntlee.

Promote the construction of mixed-use dwellings within Town Centre and Caphilly precincts.

Huntlee Academy to connect businesses with the local workforce during the construction phase of Huntlee and over the longer term. A particular focus of the Academy is to be directed towards maximising the employment potential of existing workforces at Maitland, Singleton, Branxton, North Rothbury, Greta and Cessnock.

Huntlee to establish relationships with companies working on the project local training outcomes for their employees, thus creating traineeship opportunities for local young people.

Develop a Huntlee Education Precinct to provide educational opportunities for children from preschool through to Year 12.





2

Huntlee is connected with other economic hubs of the Hunter.

.....

3

Huntlee has a competitive brand and business identity.

.....

LWP Group to invest in the upgrade of regional roads to improve connections between Huntlee and other regional centres.

Enhance Wine Country Drive between the Hunter Expressway and Katherine's Landing main entry by converting it into a four-lane boulevard. This upgrade will facilitate faster access to various locations and improve key transport connections.

NBN and FTTP connections to be available to all developments.

Huntlee to provide a choice of affordable housing options for the regional workforce (including essential workers in healthcare, education, mining as well as the retail, wine and tourism industries).

Planning and design controls to be administered and ongoing engagement to occur with builders to deliver a high-quality urban environment across Huntlee what will in turn, encourage business investment and tourists/visitors to the area.

Develop and implement a marketing strategy that effectively positions Huntlee and builds a strong, appealing brand for the Huntlee town centre.

A main street to be built in Huntlee town centre that promotes a competitive retailing and commercial leasing environment for business.

Investigate opportunities to support and develop desirable business types for key retail tenancies, such as independent local retailers like Hunter region wine/food producers, small bars, and similar ventures.



M15 and Wine Country Road Intersection

ECONOMY

Creating Local Employment & Business Opportunities



Huntlee McDonalds, Oporto and 7 Eleven

How can you get involved?

- Shop locally to support our local economy.
- Look for local job opportunities.
- Promote Huntlee to friends and visitors as a great place to live, work, invest and visit.
- Attend and enjoy local festivals and events.
- Build a local business.
- Make use of local education opportunities.



What does success look like?

- An increase in the size of the local workforce.
- Increased economic activity in the region.
- An increase in the number of Huntlee residents.
- An increase in the proportion of community members satisfied with the range of products and services available locally.
- An increase in the number of businesses and services.
- The first students enroll in Huntlee Pre School, Primary and High School.
- Increased community connections enable residents to utilise local providers and services to create a resilient neighbourhood economy.
- Huntlee's strong network connection results in a growing number of skilled and STEM workers forming business alliances and co-working agreements in the suburb.



Huntlee Fitness Success Story

The establishment of Huntlee Fitness has played a key role in supporting the economic growth of our town. As a dedicated fitness facility in the area, Huntlee Fitness has not only promoted health and wellbeing within the community but also contributed to job creation and increased local business activity.

The centre has attracted members from surrounding suburbs, boosting foot traffic and supporting nearby cafes and service providers. This development reflects a broader commitment to building a vibrant, economically resilient community where local businesses can thrive.

INNOVATION

The Best in Contemporary Living

Goal

Huntlee will provide the best of 21st-century living for those who choose to settle or visit, setting the standard for greenfield developments in regional areas. It will be at the forefront of rapidly evolving trends in alternative energy, water conservation, and waste recycling.

.....

- ACHIEVED ACTIONS
- ACTIVE ACTIONS
- FUTURE ACTIONS



Strategy

1
.....

Housing and community facilities cater for the whole of lifecycle – e.g., young families, youth, young couples, retirees, seniors living.

2
.....

Design excellence delivers quality built form and urban streetscapes.

Actions

Conduct community consultation for future planning of community facilities/services for Huntlee.

Diversity in housing to be provided in each of the villages and town centre, providing suitable options for all demographic and income groups.

Allocation of suitable sites for the full suite of aged person accommodation, from independent living units through to residential aged care facilities.

Planning controls and guidelines to be implemented to achieve quality-built form outcomes and quality urban streetscapes.

LWP Group to establish strong working relations with leading local builders to ensure quality design and a continual cycle of new housing products tailored to community needs.

Huntlee to invest significant resources into the quality of the public realm, including street tree planting, lighting, footpaths, cycleways, public art, street furniture, playgrounds recreational equipment, seating/shading, and quality walling/retaining.



3
.....

Huntlee is the forerunner of emerging trends in technology, renewable energy, water conservation, transport, and waste recycling.

Investment in research and development to establish Huntlee as a premier development in efficient and sustainable utility service provision.

A Huntlee Sustainable Strategy to be prepared and implemented that addresses wide-ranging sustainability initiatives (Including targets for energy, water, biodiversity, building materials and waste, social inclusion, and emission reduction) matches with measures/targets for ongoing performance monitoring.

Altogether Group to deliver a sustainable water network that harvests wastewater (from kitchens, laundries, bathrooms, and toilets) for purification at the Local Water Centre.

Bio-solids from wastewater purification process to be used for soil conditioners and fertilisers (agriculture, forestry, composting, land rehabilitation).

Smart wiring to be available to all homes to enable free-to air TV, telephone and internet – all through one source.

Implement Huntlee Stage 2 Green Travel Plan to promote healthy living & transport options.



INNOVATION

The best in Contemporary Living



How can you get involved?

- Invest in personal solar power for your home.
- Utilise public transport systems and support Huntlee's Stage 2 Green Travel Plan.
- Utilise available recycled water systems.
- Participate in quarterly community meetings and annual surveys to foster collaboration in future planning.



What does success look like?

- An increase in the availability of viable and affordable public transport options.
- Increased access and use of shared pathways.
- An increase in the adoption of technologies to support lifestyle and economic activities.
- LWP Group's high quality product enables residents to make sustainable choices for future retrofits and renovations.
- The high-quality built form of Huntlee results in above market return on investment for owners.



Yarrum Designer Homes

Lot Type and Diverse Housing Success Story

Huntlee has achieved a key milestone in innovative community planning with the introduction of new lot types - most notably the Urban One - bringing more housing choice to our rural setting.

Developed in the heart of the Town Centre, these compact lot types cater to first-home buyers, downsizers, and modern families seeking low-maintenance living close to local amenities.

This smart approach enhances affordability and sustainability while maintaining Huntlee's unique charm.

What's Next?

The Huntlee Community Plan is a dynamic document that belongs to the people of Huntlee. This is why we'd be delighted to hear your thoughts and suggestions on how Huntlee should grow into the future, and the types of facilities, services and other initiatives needed to support this growth.



With Huntlee in it's 11th year, LWP Group is committed to a regular review schedule that will help to keep this Community Plan on track, maintain momentum, and ensure this living document can evolve and grow alongside our community and your needs.

Collect Evaluation Data

Ongoing engagement methods, event surveys and bi-annual resident and visitor surveys will provide us with a strong base to ensure we know our community and what they value and prioritise.

Evaluate Program Efficacy (prior calendar year)

Utilise our measures of success to understand how effective each program and project has been in creating a connected, healthy, and vibrant Huntlee.

Review Event Schedule (upcoming calendar year)

Assess the annual event landscape in Huntlee, including the type of events and their frequency, to ensure the needs of the community continue to be met.

Ongoing evaluation will ensure all stakeholders have the necessary resources to transition the community from the role of Participant to Leader in building a community in Huntlee.

Review Action Plan and Programming

Address any immediate issues and identify where further corrective action may need to be undertaken, to better respond to the evolving needs of the community.

- Use data collected to make 'what success looks like' specific and quantifiable.
- Update outcomes and actions.
- Evaluation of events schedule and delivery processes.

Full Document Review

This review is the first opportunity to draw on the data collected over the 5 years to understand what has been successful and unsuccessful in order to amend the entire plan so it reflects the progression of the development and community.

- Full review of vision, purpose, outcomes, and actions.
- Implementation of 5-10 year review milestones.
- Update community demographics and information.
- Use data collected to make 'what success looks like and 'how success is measured' more specific and quantifiable.
- Highlight projects that have been successful and set the bar for community development in Huntlee.
- Identify the roles of LWP Group and the community in the forthcoming 5 year period, acknowledging the need to transition to sustainable community development.

2026	2027	2028	2029	2030
✓	✓	✓	✓	✓
✓	✓	✓	✓	✓
	✓	✓	✓	✓
		✓		✓
				✓

How do we measure success?

As we work towards a clear, shared vision for the Huntlee community, we need to ensure we understand what success looks like, and how we can evaluate the effectiveness, efficiency, and future plan for each of our programs and projects. Identifying issues early and addressing them in a sustainable way is a key outcome of the review schedule.

Ongoing evaluation will also ensure all stakeholders have the necessary resources to transition the community from the role of Participant to Leader in the building community in Huntlee.



PEOPLE

Community Engagement and Participation

HOW? Track the level of active participation in community events, programs, and initiatives.

Satisfaction and Feedback

HOW? Surveys and feedback opportunities will be conducted to gauge overall community satisfaction. Constructive feedback will guide improvements.

Inclusion and Representation

HOW? Evaluate the community's success in fostering diversity and inclusion by measuring the representation of different demographics in community events, meetings and multicultural celebrations.

Achievement of Actions

HOW? Success will also be determined by our ability to meet clearly defined community actions. This could include launching new initiatives, completing projects, or reaching key milestones.



ENVIRONMENT

Environmental Education and Awareness

HOW? We will measure the success of environmental education programs by the number of workshops, events, or campaigns held to raise awareness on sustainability issues.

Water Recycling

HOW? Success will be measured by the increased volume of wastewater recycled through the Huntlee Water Treatment Plant.



Huntlee District Park



ECONOMY

Local Business Growth

HOW? We will assess the growth of local businesses by monitoring the number of new business startups, the expansion of existing businesses within the Huntlee Commercial District.

Support for Business Owners

HOW? The success of initiatives that support entrepreneurs and small businesses can be measured by the number of participants and the success rate of these startups.



INNOVATION

Public Transport Availability

HOW? NSW Transport - Bus and train routes and usage statistics.

Number of New Projects and Ideas

HOW? Success will be measured by tracking the number of innovative projects, initiatives, or startups launched within the community.

Water Recycling

HOW? Success will be measured by ensuring the connection of all new Huntlee developments to the wastewater treatment system and continued use of recycled water by the residents/businesses.

What does corrective action look like?




- Amendments to the Community Plan actions, outcomes, or vision.
- Amendments to the review schedule.
- Changing language.
- Adding new actions to address a community need.
- Updating demographic data upon the publishing of census results.
- Updating the Community Plan upon changes to the nature or design of the Huntlee development.
- Clearly identifying partners and community responsibility as the community establishes itself.

To find out more and understand how you can help build the heart and soul of Huntlee, we would love you to get in touch with our office. There are several ways you can provide your feedback and share suggestions.

Visit huntlee.com.au

Write to LWP Group:

LWP Group Pty Ltd
PO Box 199
Branxton NSW 2335

 facebook.com/HuntleeNewTown
 youtube.com/LWPHuntlee
 instagram.com/HuntleeNewTown



We will also be providing you with regular information and updates about the project via the Huntlee Pulse Newsletter and at future community events.

Welcome to the Heart of the Hunter Valley, together we're its vibrancy and soul.

Huntlee

All information and plans contained within this brochure were correct at time of going to print; however they may be subject to change.

