

water, only better

Welcome to our sustainable water community.

Your home is in a community that gets its water services from an independent Australian water utility, Altogether Group Pty Ltd. Altogether provides homes with high quality water and wastewater services.

By using recycled water for things like gardening, flushing toilets and washing clothes – you're saving up to 70% of the drinking water you'd normally use on these household activities.

How does it work?

The recycled water and wastewater in your home are part of a cyclical, balanced water system. Household wastewater is taken from bathrooms, toilets, laundries and kitchens straight to the Local Water Centre where it is treated to high quality and returned to homes, businesses, parks and open spaces through purple recycled water pipes. The system relies on you maximising the number of permissible recycled water uses in your home, such as connecting your washing machine to recycled water.

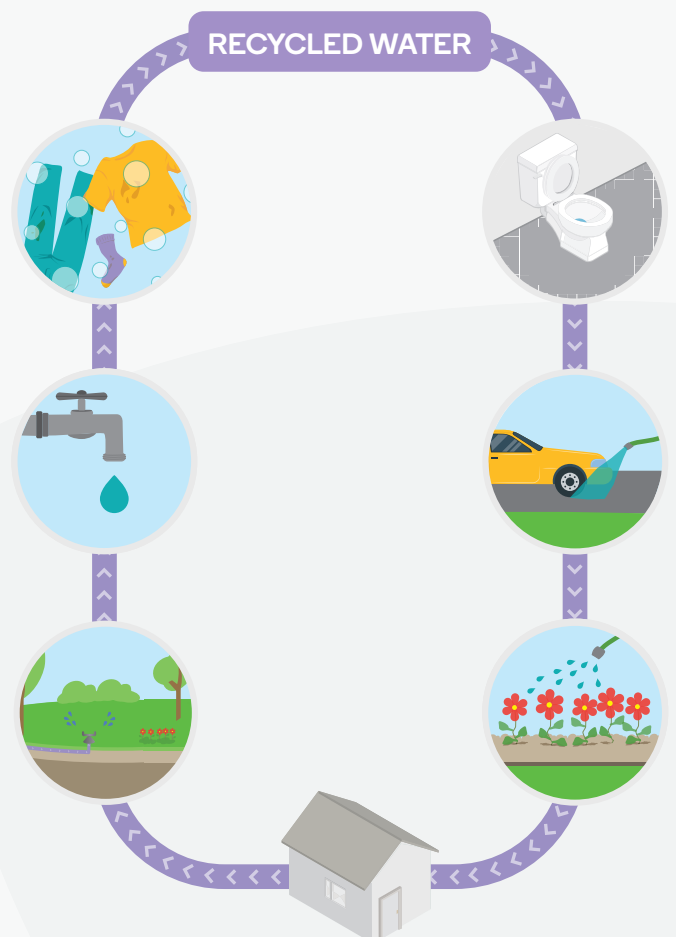
What can recycled water be used for?*

- Flushing toilets
- Washing clothes (cold water tap)
- Watering the garden
- Washing cars, boats and caravans
- Cleaning windows, paths, driveways and outdoor furniture
- Ornamental water features

*Check the authorised purposes in your community at our website

What are the main benefits?

- Highest BASIX water ratings with no need for a rainwater tank
- Saves precious drinking water
- Improved environmental outcomes as wastewater is not released into our waterways
- Secure water supply during drought

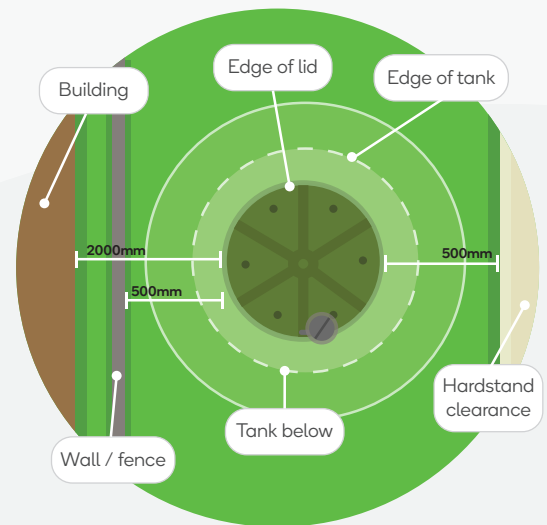
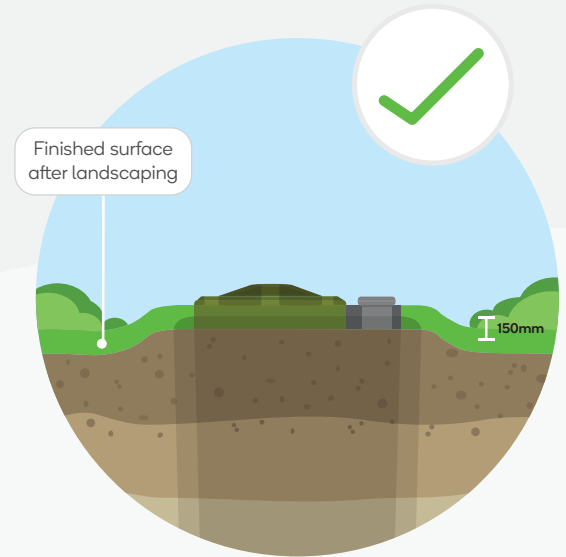


Installation

Altogether's wastewater collection tank and boundary kit are installed as part of the subdivision development of your land. They have been positioned in the most suitable location for the sewerage system to operate on your property. This takes into account the topography of the land, the connection to the network mains in the street, and the hydraulic design requirement of being able to drain the wastewater from the future dwelling.

Building guidelines

- Ensure your home design includes at least two outdoor recycled water taps to cover all permissible uses. For example, access in the back yard for watering your garden, and access in the front yard to wash your car.
- The top of overflow relief gullies need to be above the final ground level or path level.
- Your wastewater collection tank and boundary kit must never be buried. Altogether needs access at all times. Surface water must drain away from the tank lid.
- If you would like to raise the level of your land you may need to raise the level of our wastewater collection tank using a riser. Risers can be purchased through Altogether.
- You must adhere to the mandatory clearances for landscaping or building around the wastewater collection tank, as illustrated in the diagrams at right. Some types of plants with invasive roots are not permitted near our infrastructure.



Connecting is easy

- Go to altogethergroup.com.au
- Click on connect and follow the step-by-step application

Altogether will review your design and landscape plans to ensure you have planned around our requirements and will inspect your property before the wastewater service is connected by us at the end of your build.

To find out more, visit altogethergroup.com.au or call **1300 803 803**



SCAN HERE
TO ACCESS ALL
BUILDING RESOURCES

