

Huntlee new primary school and high school

Planning update | June 2024

Investing in our schools

As part of the NSW Government's plan to rebuild public education, the 2024-25 Budget is delivering record education funding, including \$1.4 billion for new and upgraded schools in regional NSW. This targeted investment will ensure growing communities get access to a world class public education.

As part of this investment, a new public preschool, primary school and high school will be built in Huntlee.

Project overview

To accommodate the future needs of communities across NSW, the NSW Government is planning for future schools, including new schools in Huntlee that will serve the Huntlee, Branxton and North Rothbury communities in the Hunter.

Progress update

Planning for the new public preschool, primary school and new public high school for Huntlee is underway, to open by Day 1 Term 1 2028. This work includes considering the demographic and education requirements for the schools, conducting site investigations and assessments, as well as design work.

During the last 6 months, planning activities for the new schools have focused on:

- finalising the site for the schools - the Department of Education now owns 3 hectares of the future school site (shown overleaf), with additional adjoining land to be acquired for the full site
- due diligence investigations (including surveys, bushfire assessments and other studies) which aid and inform the design of the schools
- detailed service needs analysis which informs the sizing of the schools
- developing master planning options that consider the general layout and locations of the proposed buildings
- continued engagement with educational leadership and other government agencies as part of the planning process.

Next steps

Upcoming planning activities will include continuing to develop the master plan and ongoing work to secure the additional land required.



Email: schoolinfrastructure@det.nsw.edu.au
Phone: 1300 482 651
www.schoolinfrastructure.nsw.gov.au

More information

We are committed to working with our school communities and stakeholders and will share more details with the community as the project progresses.

To keep up to date, scan the QR code or contact us on 1300 482 651 or schoolinfrastructure@det.nsw.edu.au.



Figure 1: Location of the land (3-hectares) already acquired for the new schools.

New primary school and high school at Huntlee

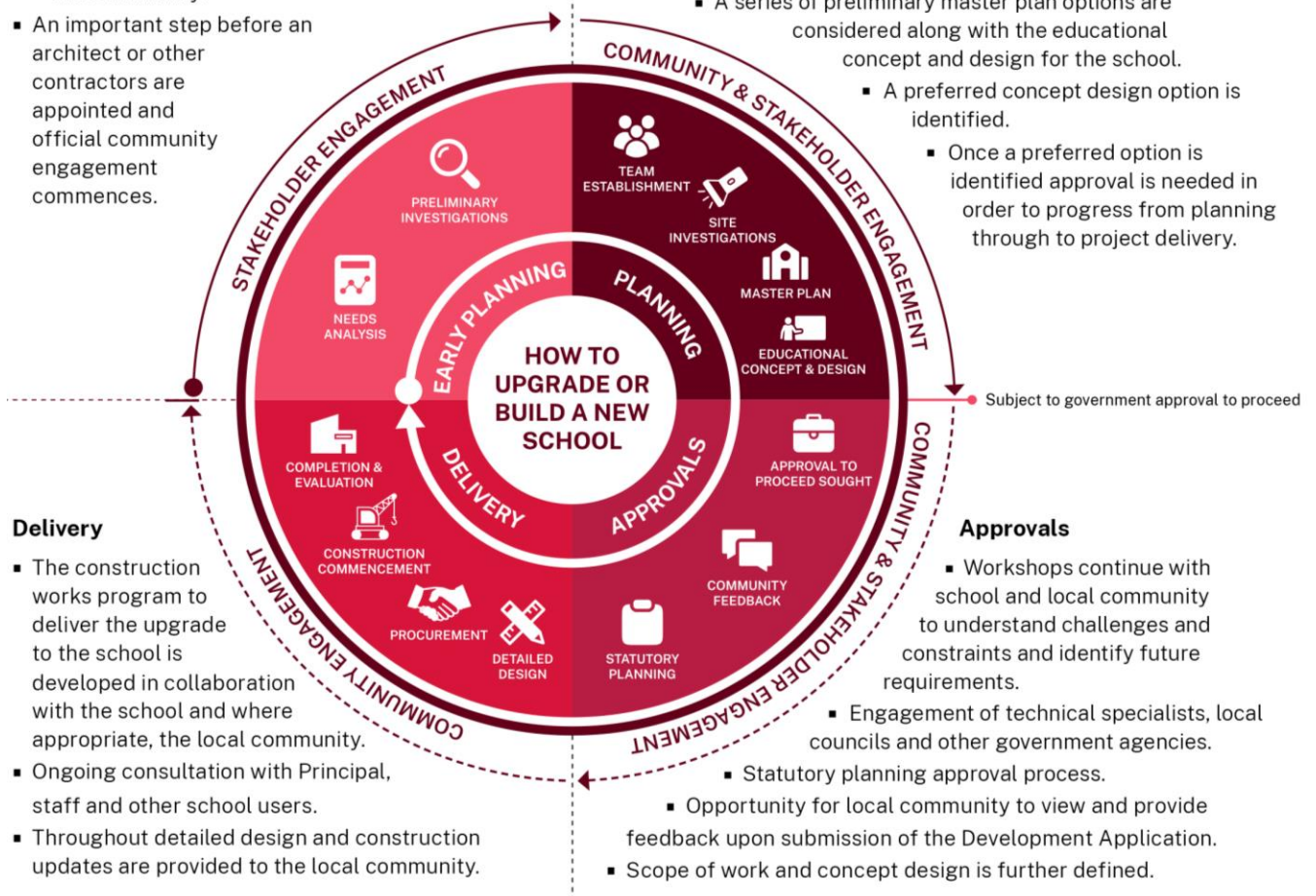
Funding has been allocated for a new public preschool, primary school and high school in Huntlee. The information below takes you through the journey of upgrading or building a new school.

Early planning

- Consideration and studies of demographic trends, education requirements, the condition of the existing school buildings, catchment boundaries, heritage requirements, transport links and partnership opportunities.
- Doing so means that we:
 - consider the needs of the local area now and into the future.
 - ensure the right school is designed for the community.
- An important step before an architect or other contractors are appointed and official community engagement commences.

Planning

- Consultants such as architects and project managers are appointed.
- Investigation and review of site and development of master plan options.
- Master planning considers options for the general size, shape and form of buildings for a specific school site.
- A Project Reference Group (PRG) is established.
- Operational, educational and service delivery factors are understood and considered by the PRG.
 - A series of preliminary master plan options are considered along with the educational concept and design for the school.
 - A preferred concept design option is identified.
 - Once a preferred option is identified approval is needed in order to progress from planning through to project delivery.



Delivery

- The construction works program to deliver the upgrade to the school is developed in collaboration with the school and where appropriate, the local community.
- Ongoing consultation with Principal, staff and other school users.
- Throughout detailed design and construction updates are provided to the local community.

Approvals

- Workshops continue with school and local community to understand challenges and constraints and identify future requirements.
 - Engagement of technical specialists, local councils and other government agencies.
 - Statutory planning approval process.
 - Opportunity for local community to view and provide feedback upon submission of the Development Application.
 - Scope of work and concept design is further defined.