

Built on trust since 1990™

CORAL HOMES

Single Storey Homes



Photography depicts items such as homewares, furniture and may depict items that are upgraded or not supplied by Coral Homes. Speak with your New Home Consultant for more details.

Our Difference

Since its inception in 1990, Coral Homes' vision was to provide innovative home designs built on quality craftsmanship with exceptional attention to detail.



HIA Professional Builder

The Housing Industry Association (HIA) Awards annually champions the industry's leading builders and Coral Homes has proudly received the most prestigious industry award – Professional Major Builder of 2021!



Decades of Experience

Australian families have trusted us to build their new home for over 30 years. Offering a high level of craftsmanship, value for money, security and transparency is why we are one of Australia's largest home builders today.



Customer Focused

We really value the feedback our customers provide throughout their building journey which is why we are extremely proud to share our Product Review annual award for best builder for 2021.

★★★★★ 4.6 Star Rating*

*Rating taken at 1st June 2021.



Your Peace of Mind

Coral Homes has cemented themselves as a trusted brand for over 30 years by offering customers unbeatable value, fixed-price guarantees, outstanding aftercare and so much more.



Unbeatable Value

Our promise to you is to always provide you with outstanding value for money. We put more into our standard inclusions, so you don't need to spend thousands of dollars on upgrades later.



Open Pricing Policy

In addition to pricing being openly available on our website, our New Home Consultants will happily provide you with a free estimate including site works. That means - no deposit required upfront!



Independent Quality Checks

We have a stringent seven step Quality Assurance process to ensure we build each and every home to a high quality. This process includes an independent quality inspection, to ensure we deliver above the expected industry standards.



Outstanding Aftercare

After taking possession of the keys to their new home, Coral Homes' Service & Warranty Program gives homeowners the necessary information and tools to maintain and extend the life of their products.

Welcome

Dedicated to *Creating lifestyles to be proud of*, Coral Homes' single storey home design series offer style, quality and functionality across one level. Choose from an abundance of flexible floorplans and facades to suit your lifestyle.



Photography depicts items such as homewares, furniture, landscaping, fencing and may depict items that are upgraded or not supplied by Coral Homes. Speak with your New Home Consultant for more details.

Milan Series

When it comes to design innovation and great use of space, the Milan Series is sure to impress. This functional single storey home fits on both narrow and traditional lots of land over 12.5m in width, with 10 floorplans to choose from – all boasting four bedrooms and a double garage.

Award winning
On display



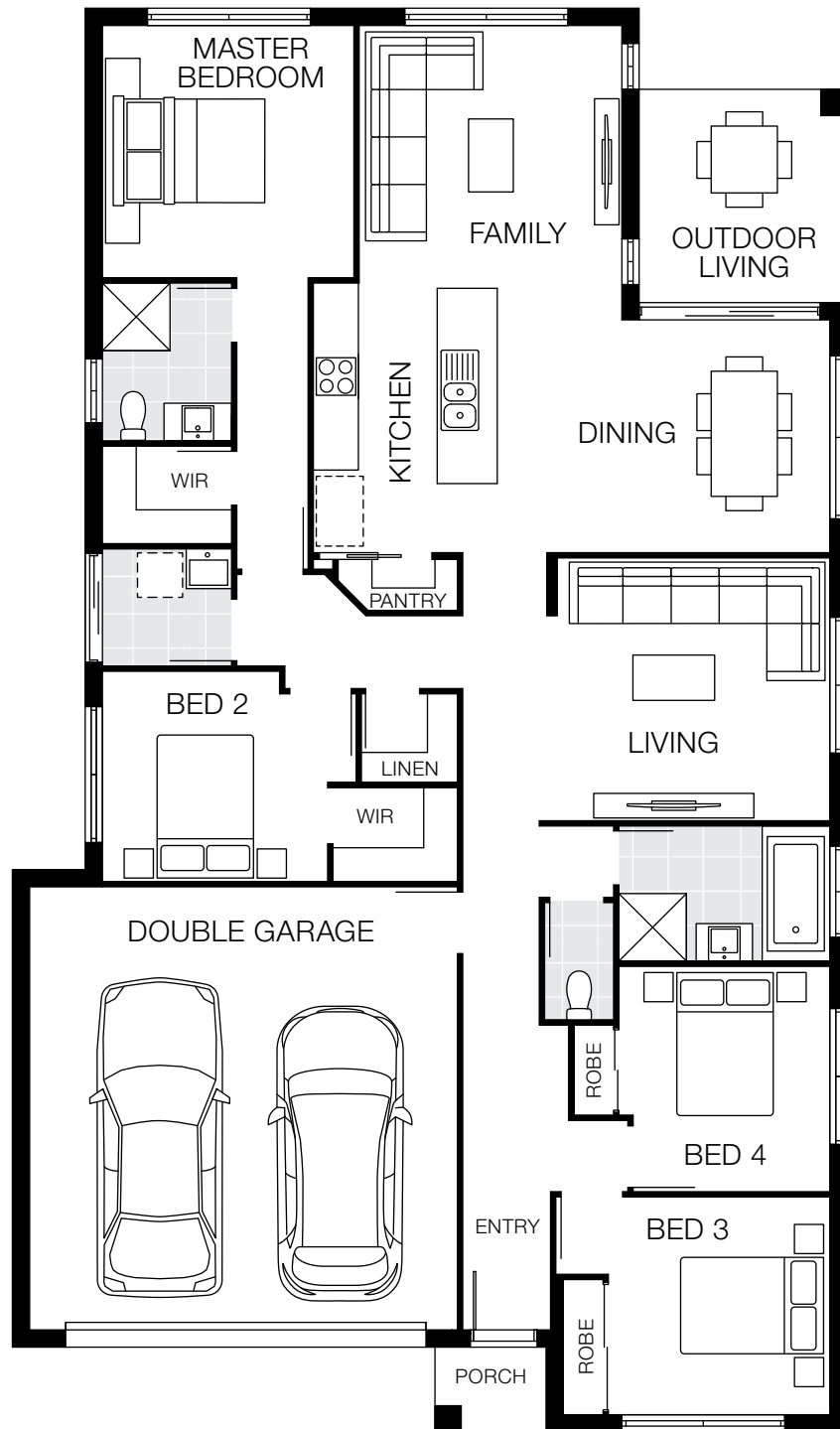
Milan 29 - Banyan Hills Display, Ballina







Milan 25 MKII - Yarrabilba Display, Yarrabilba



Milan 20



12.5m⁺ Lot Width

4 Bed 2 Living 2 Bath 2 Car

Bedrooms

Master Bedroom	3360 x 3350
Bed 2	2800 x 3000
Bed 3	2900 x 2950
Bed 4	3000 x 2810

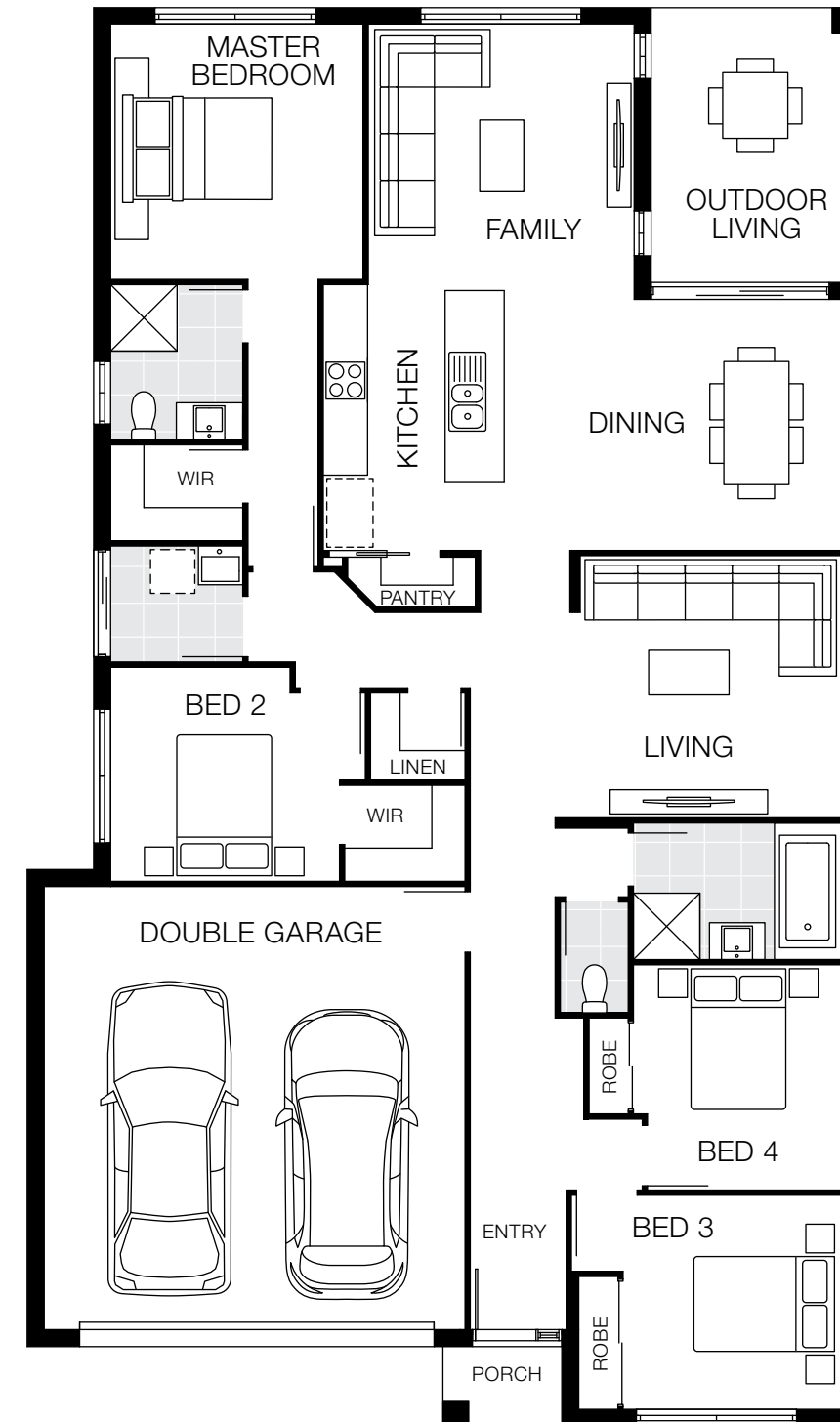
Living Areas

Family	3760 x 3500
Dining	3100 x 4000
Living	3500 x 3630
Outdoor Living	2840 x 2770





House Dimensions

House Length	18.96m
House Width	11.12m
House Area	190.36m ² (20.50sq)

Milan 21



12.5m⁺ Lot Width

 4 Bed
  2 Living
  2 Bath
  2 Car

Bedrooms

Master Bedroom	3450 x 3420
Bed 2	2900 x 3100
Bed 3	2900 x 2950
Bed 4	3050 x 2810

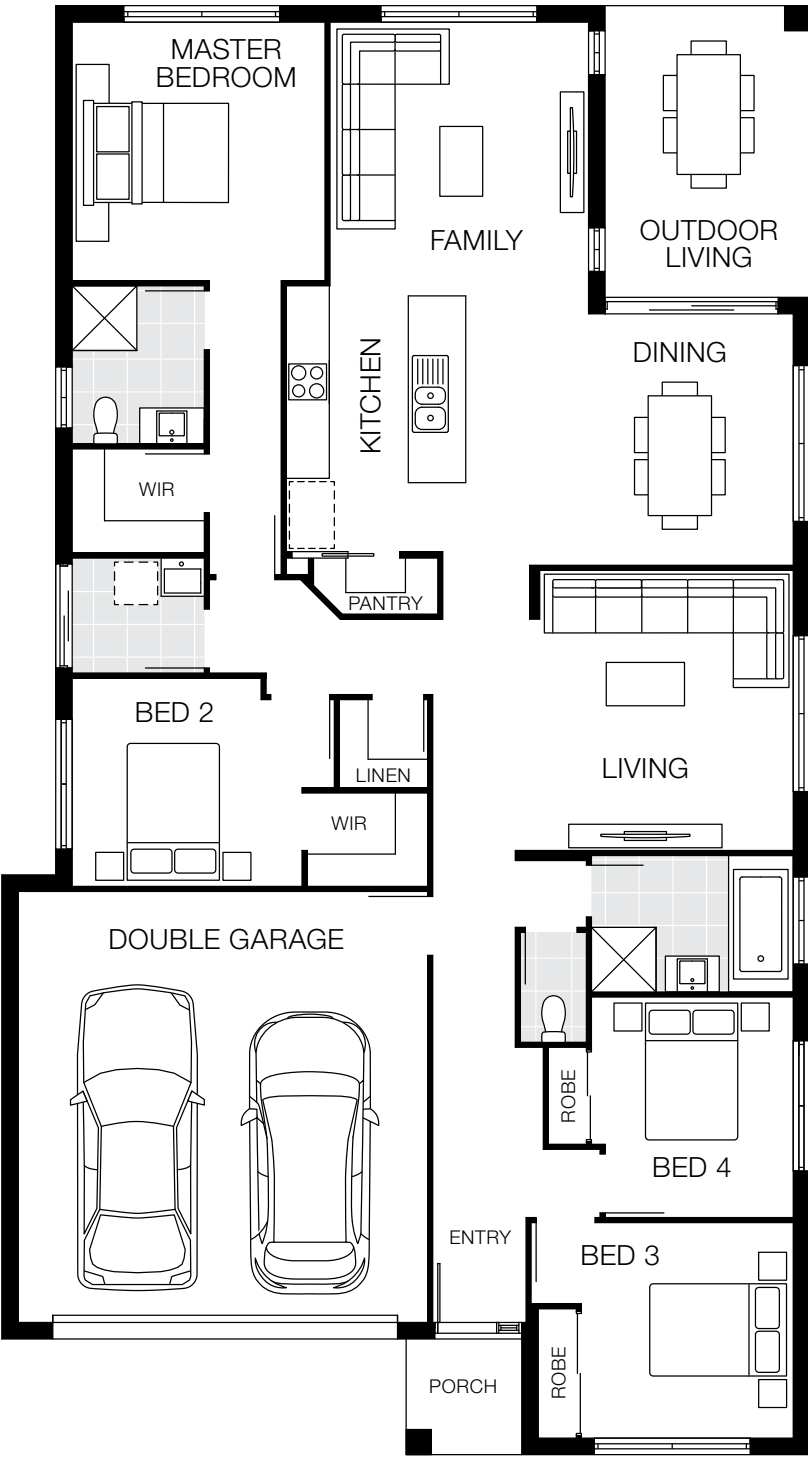
Living Areas

Family	3600 x 3600
Dining	3400 x 4000
Living	3550 x 3530
Outdoor Living	3720 x 2800

House Dimensions

House Length	19.21m
House Width	11.25m
House Area	199.53m ² (21.50sq)

Milan 22



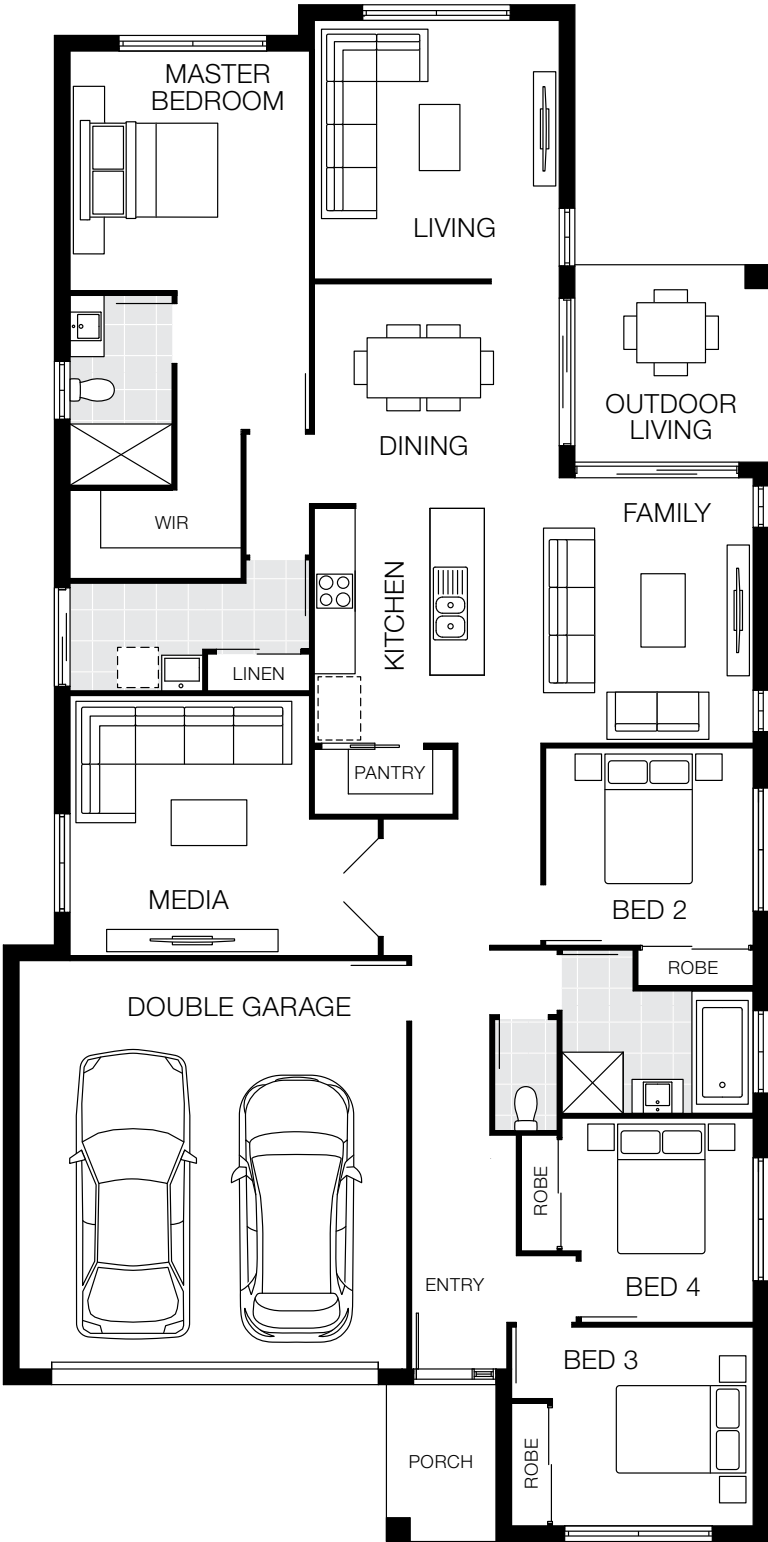
12.5m+ Lot Width

4 Bed 2 Living 2 Bath 2 Car

Bedrooms	
Master Bedroom	3600 x 3520
Bed 2	2900 x 3200
Bed 3	3000 x 2950
Bed 4	3070 x 2810
Living Areas	
Family	3810 x 3600
Dining	3500 x 4000
Living	3900 x 3530
Outdoor Living	4060 x 2850
House Dimensions	
House Length	20.17m
House Width	11.25m
House Area	208.77m² (22.50sq)

Floorplan based on Designer Facade. Floorplan is indicative only, conceptual in nature and subject to change. Floorplan may depict features and/or other products which are not included in the house design, not included in the house price and/or not available from Coral Homes. All measurements are in millimetres unless otherwise stated. Floorplan measurements are approximate and are not to scale. Lot width is based on Designer facade and is to be used as a guide only and may change due to developer covenants and Local Authority guidelines. ©Coral Homes Pty Ltd. The copyright in this floorplan is owned by or licensed to Coral Homes Pty Ltd and may not be reproduced, copied or dealt with in any manner which infringes the exclusive rights of Coral Homes Pty Ltd as prescribed by the Copyright Act 1968, without the express written authorisation of Coral Homes Pty Ltd.

Milan 23



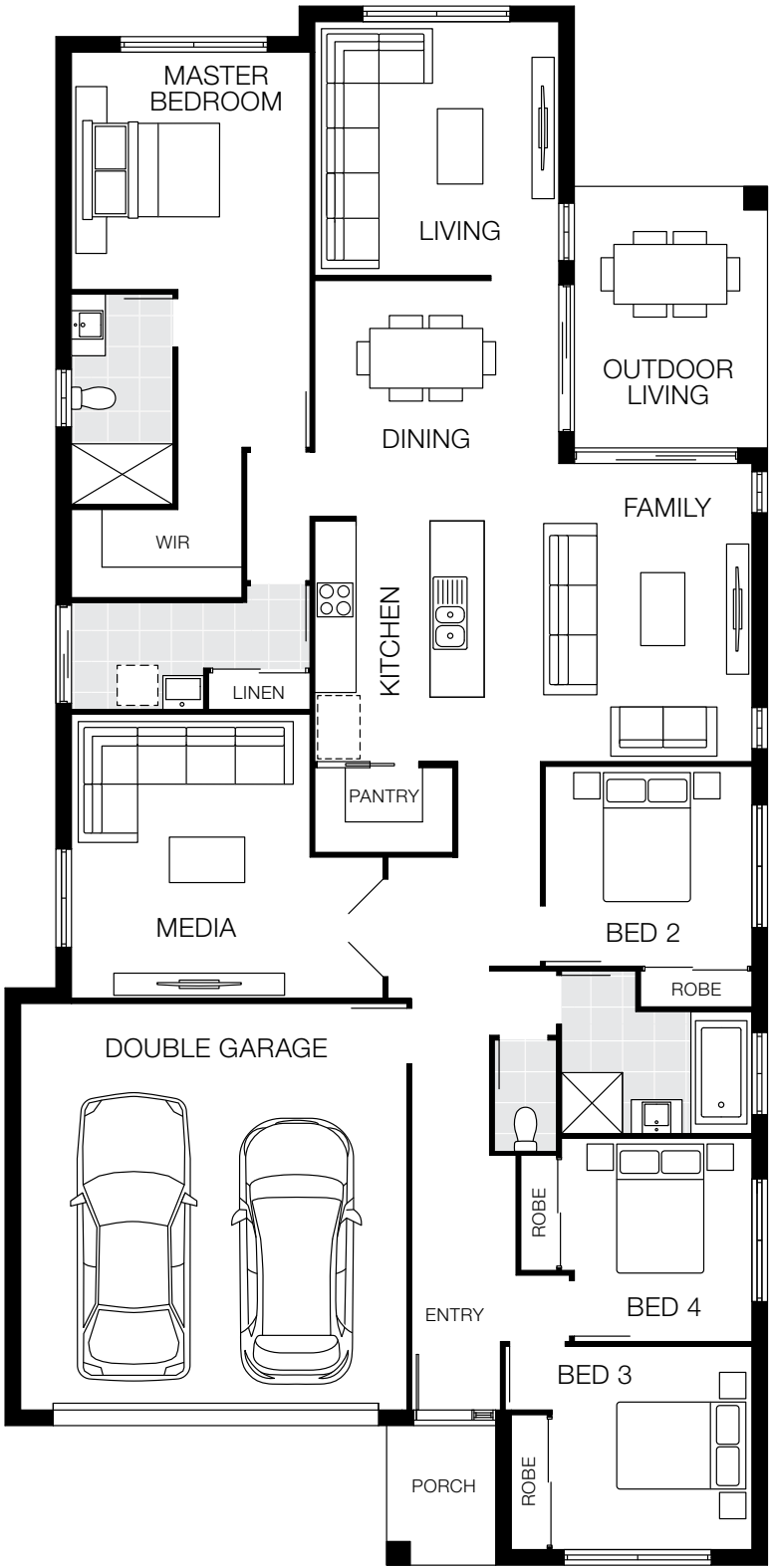
12.5m+ Lot Width

4 Bed 3 Living 2 Bath 2 Car

Bedrooms	
Master Bedroom	3520 x 3520
Bed 2	2900 x 3050
Bed 3	2920 x 2950
Bed 4	3000 x 2810
Living Areas	
Family	3900 x 3840
Dining	3310 x 3600
Living	3800 x 3600
Media	3715 x 3520
Outdoor Living	2900 x 2850
House Dimensions	
House Length	22.58m
House Width	11.25m
House Area	218.19m² (23.50sq)

Floorplan based on Designer Facade. Floorplan is indicative only, conceptual in nature and subject to change. Floorplan may depict features and/or other products which are not included in the house design, not included in the house price and/or not available from Coral Homes. All measurements are in millimetres unless otherwise stated. Floorplan measurements are approximate and are not to scale. Lot width is based on Designer facade and is to be used as a guide only and may change due to developer covenants and Local Authority guidelines. ©Coral Homes Pty Ltd. The copyright in this floorplan is owned by or licensed to Coral Homes Pty Ltd and may not be reproduced, copied or dealt with in any manner which infringes the exclusive rights of Coral Homes Pty Ltd as prescribed by the Copyright Act 1968, without the express written authorisation of Coral Homes Pty Ltd.

Milan 24



12.5m+ Lot Width

4 Bed 3 Living 2 Bath 2 Car

Bedrooms	
Master Bedroom	3510 x 3520
Bed 2	2950 x 3050
Bed 3	3000 x 3000
Bed 4	3000 x 2810

Living Areas	
Family	4400 x 3840
Dining	3410 x 3600
Living	3750 x 3600
Media	4200 x 3520
Outdoor Living	3860 x 2850

House Dimensions	
House Length	23.01m
House Width	11.25m
House Area	227.20m² (24.50sq)

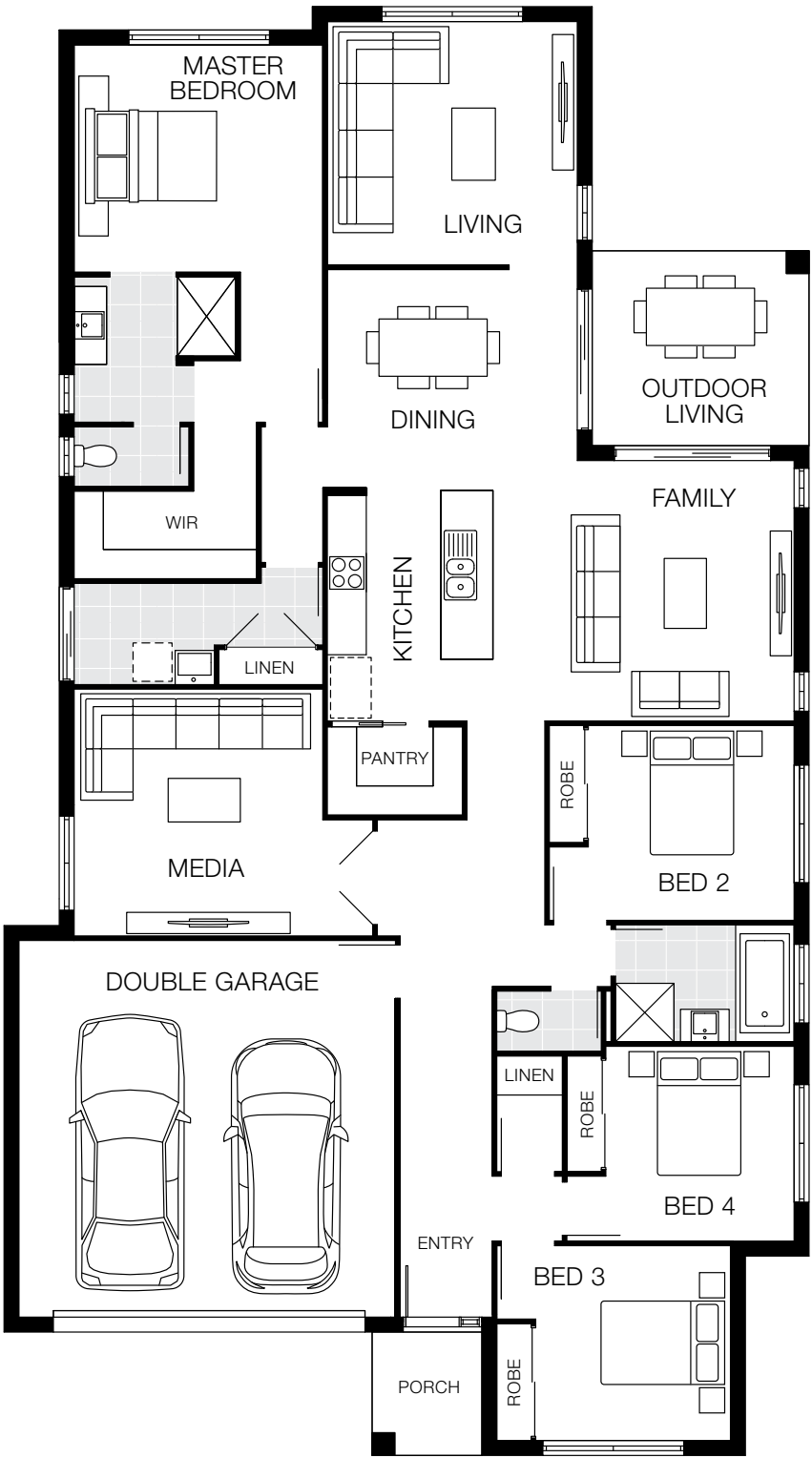
Design Options Available

Mirror Rear

Additional costs may apply for design options.

Floorplan based on Designer Facade. Floorplan is indicative only, conceptual in nature and subject to change. Floorplan may depict features and/or other products which are not included in the house design, not included in the house price and/or not available from Coral Homes. All measurements are in millimetres unless otherwise stated. Floorplan measurements are approximate and are not to scale. Lot width is based on Designer facade and is to be used as a guide only and may change due to developer covenants and Local Authority guidelines. ©Coral Homes Pty Ltd. The copyright in this floorplan is owned by or licensed to Coral Homes Pty Ltd and may not be reproduced, copied or dealt with in any manner which infringes the exclusive rights of Coral Homes Pty Ltd as prescribed by the Copyright Act 1968, without the express written authorisation of Coral Homes Pty Ltd.

Milan 25



14m+ Lot Width

4 Bed 3 Living 2 Bath 2 Car

Bedrooms	
Master Bedroom	3500 x 3830
Bed 2	3000 x 3170
Bed 3	3000 x 3000
Bed 4	3000 x 2900

Living Areas	
Family	4010 x 4540
Dining	3330 x 3850
Living	3750 x 3850
Media	3800 x 3830
Outdoor Living	3000 x 3340

House Dimensions	
House Length	22.31m
House Width	12.40m
House Area	236.87m² (25.50sq)

Design Options Available

Mirror Rear

Additional costs may apply for design options.

Floorplan based on Designer Facade. Floorplan is indicative only, conceptual in nature and subject to change. Floorplan may depict features and/or other products which are not included in the house design, not included in the house price and/or not available from Coral Homes. All measurements are in millimetres unless otherwise stated. Floorplan measurements are approximate and are not to scale. Lot width is based on Designer facade and is to be used as a guide only and may change due to developer covenants and Local Authority guidelines. ©Coral Homes Pty Ltd. The copyright in this floorplan is owned by or licensed to Coral Homes Pty Ltd and may not be reproduced, copied or dealt with in any manner which infringes the exclusive rights of Coral Homes Pty Ltd as prescribed by the Copyright Act 1968, without the express written authorisation of Coral Homes Pty Ltd.

On display

Milan 25 MKII

12.5m+ Lot Width

4 Bed 3 Living 2 Bath 2 Car

Bedrooms

Master Bedroom	3650 x 3520
Bed 2	2900 x 3000
Bed 3	3000 x 3040
Bed 4	3000 x 2900

Living Areas

Family	4300 x 3840
Dining	3000 x 3600
Living	3850 x 3600
Media	3900 x 3520
Outdoor Living	6620 x 2850

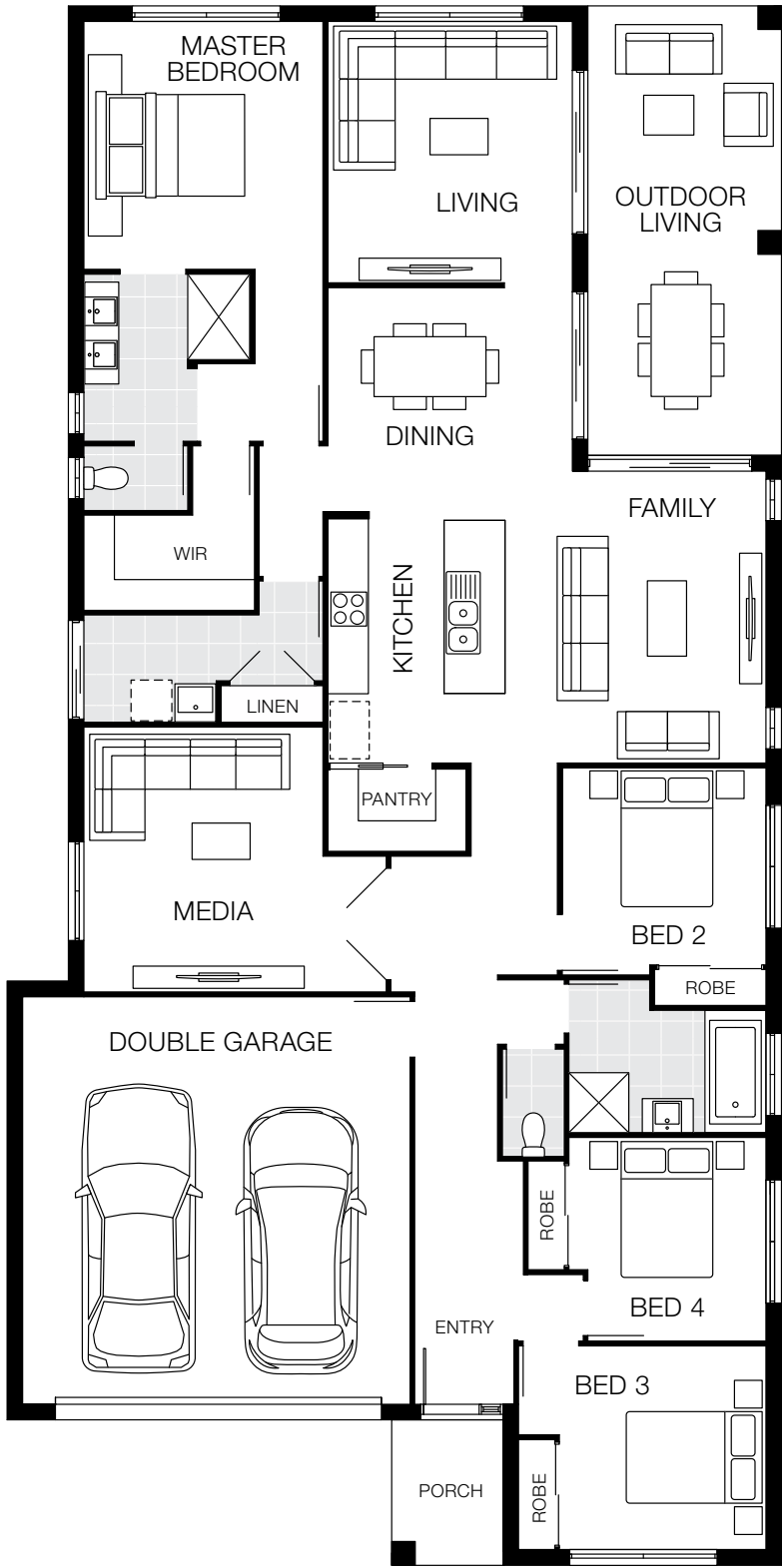
House Dimensions

House Length	22.96m
House Width	11.40m
House Area	236.71m ² (25.48sq)

Design Options Available

Mirror Rear	●
-------------	---

Additional costs may apply for design options.



Floorplan based on Designer Facade. Floorplan is indicative only, conceptual in nature and subject to change. Floorplan may depict features and/or other products which are not included in the house design, not included in the house price and/or not available from Coral Homes. All measurements are in millimetres unless otherwise stated. Floorplan measurements are approximate and are not to scale. Lot width is based on Designer facade and is to be used as a guide only and may change due to developer covenants and Local Authority guidelines. ©Coral Homes Pty Ltd. The copyright in this floorplan is owned by or licensed to Coral Homes Pty Ltd and may not be reproduced, copied or dealt with in any manner which infringes the exclusive rights of Coral Homes Pty Ltd as prescribed by the Copyright Act 1968, without the express written authorisation of Coral Homes Pty Ltd.

Award winning

On display

Milan 27

14m+ Lot Width

4 Bed 3 Living 2 Bath 2 Car

Bedrooms

Master Bedroom	3560 x 3900
Bed 2	3000 x 3360
Bed 3	3000 x 3000
Bed 4	3000 x 3000

Living Areas

Family	4210 x 4980
Dining	3350 x 4300
Living	4000 x 4300
Media	4270 x 3830
Outdoor Living	3500 x 3220

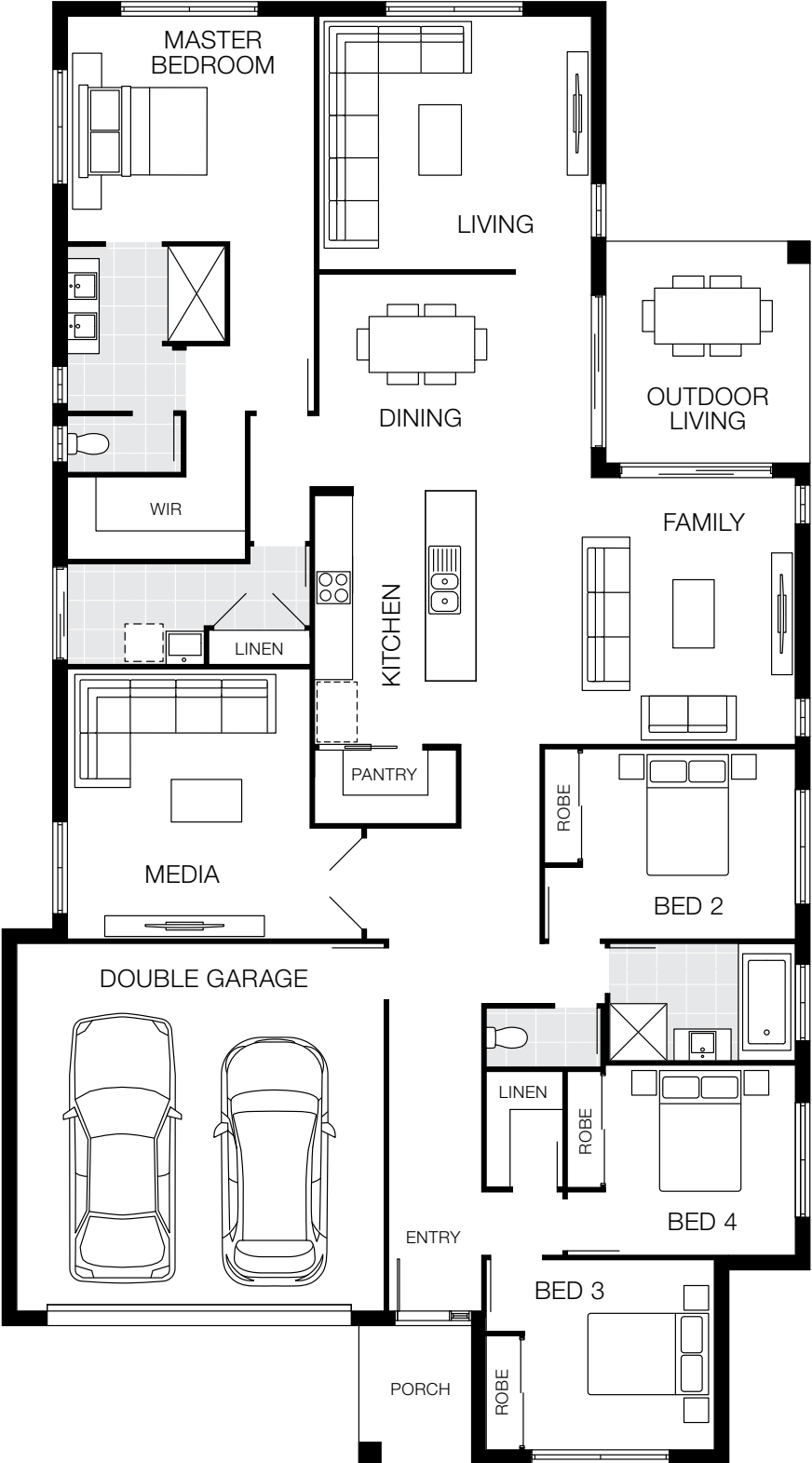
House Dimensions

House Length	23.08m
House Width	12.75m
House Area	254.14m ² (27.36sq)

Design Options Available

Grand Outdoor	●
Guest Bedroom	●
Mirror Bed-Bath	●
Living Dining	●

Additional costs may apply for design options.



Floorplan based on Designer Facade. Floorplan is indicative only, conceptual in nature and subject to change. Floorplan may depict features and/or other products which are not included in the house design, not included in the house price and/or not available from Coral Homes. All measurements are in millimetres unless otherwise stated. Floorplan measurements are approximate and are not to scale. Lot width is based on Designer facade and is to be used as a guide only and may change due to developer covenants and Local Authority guidelines. ©Coral Homes Pty Ltd. The copyright in this floorplan is owned by or licensed to Coral Homes Pty Ltd and may not be reproduced, copied or dealt with in any manner which infringes the exclusive rights of Coral Homes Pty Ltd as prescribed by the Copyright Act 1968, without the express written authorisation of Coral Homes Pty Ltd.




Photography depicts items such as homewares, furniture, landscaping, fencing and may depict items that are upgraded or not supplied by Coral Homes. Speak with your New Home Consultant for more details.

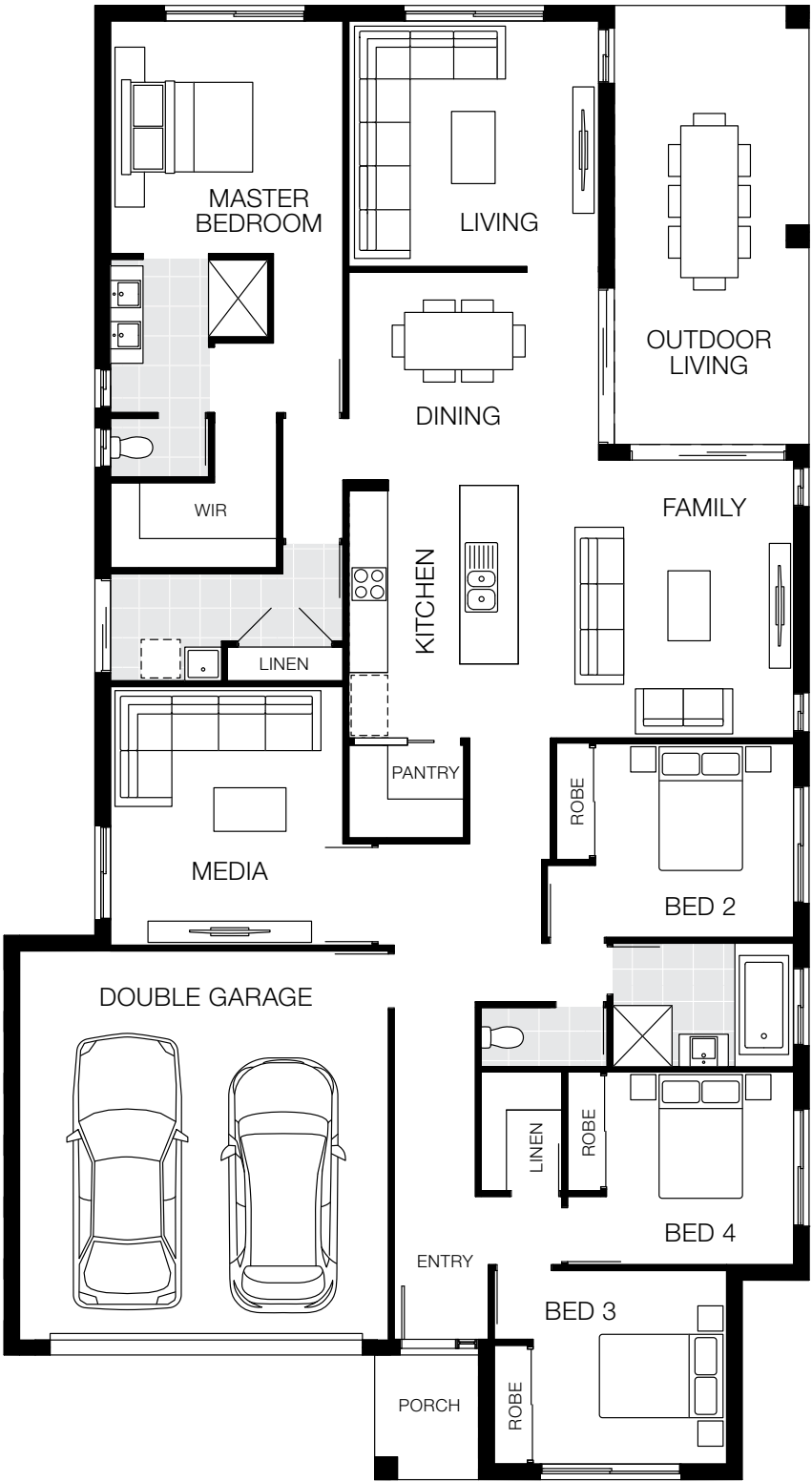
Single Storey - Traditional Lot

Milan 27 MKII

14m+ Lot Width

- 
4 Bed
- 
3 Living
- 
2 Bath
- 
2 Car

Bedrooms	
Master Bedroom	3600 x 3600
Bed 2	3000 x 3070
Bed 3	3000 x 3000
Bed 4	2990 x 2900
Living Areas	
Family	4300 x 4250
Dining	3290 x 3870
Living	3800 x 3870
Media	4000 x 4050
Outdoor Living	6760 x 3000
House Dimensions	
House Length	22.70m
House Width	12.40m
House Area	247.31m ² (26.62sq)



Floorplan based on Designer Facade. Floorplan is indicative only, conceptual in nature and subject to change. Floorplan may depict features and/or other products which are not included in the house design, not included in the house price and/or not available from Coral Homes. All measurements are in millimetres unless otherwise stated. Floorplan measurements are approximate and are not to scale. Lot width is based on Designer facade and is to be used as a guide only and may change due to developer covenants and Local Authority guidelines. ©Coral Homes Pty Ltd. The copyright in this floorplan is owned by or licensed to Coral Homes Pty Ltd and may not be reproduced, copied or dealt with in any manner which infringes the exclusive rights of Coral Homes Pty Ltd as prescribed by the Copyright Act 1968, without the express written authorisation of Coral Homes Pty Ltd.

On display

Our most popular

Milan 29

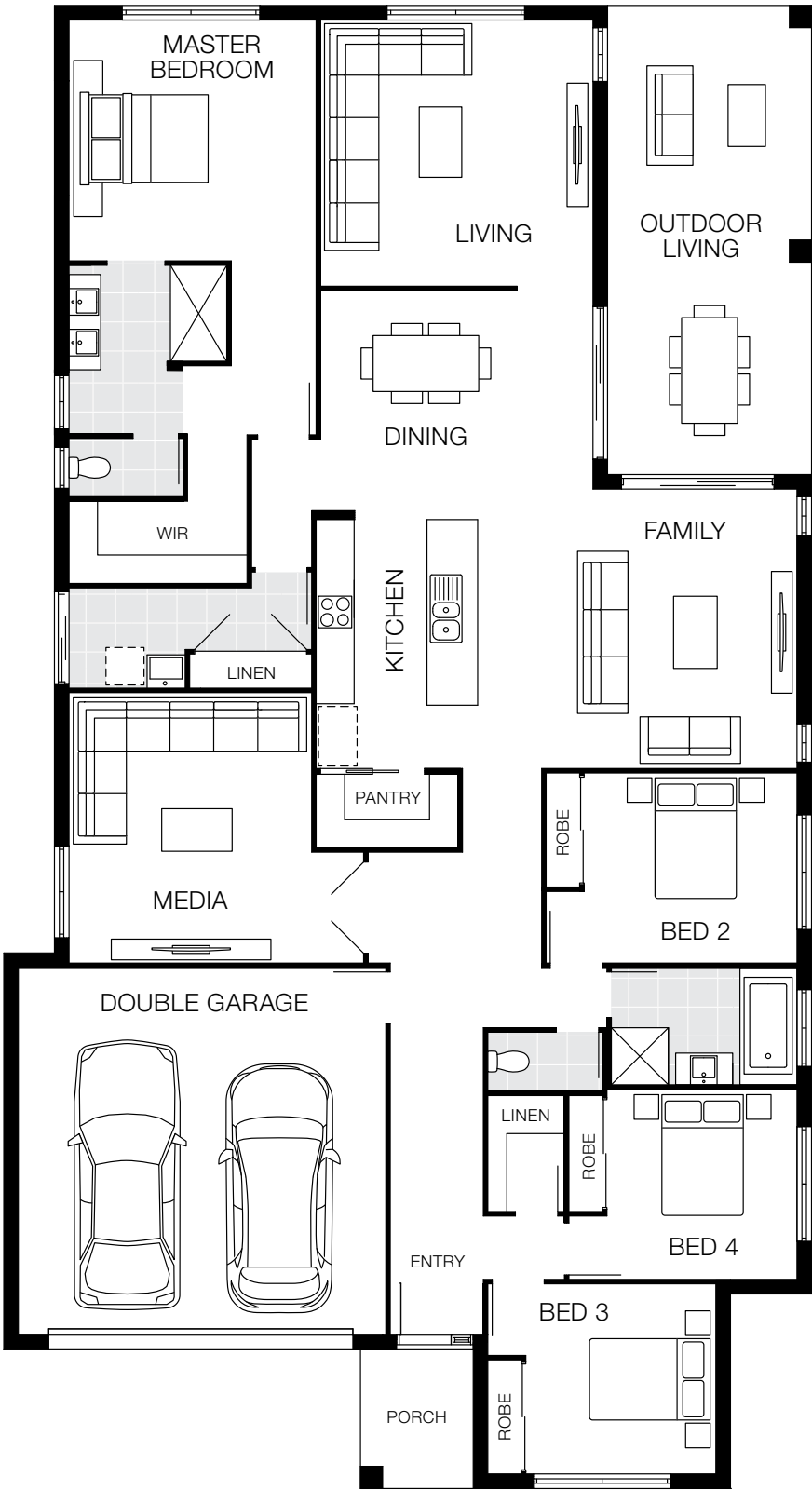
14m+ Lot Width

- 4 Bed
- 3 Living
- 2 Bath
- 2 Car

Bedrooms	
Master Bedroom	3800 x 3900
Bed 2	3000 x 3360
Bed 3	3000 x 3000
Bed 4	3000 x 3000
Living Areas	
Family	4410 x 4980
Dining	3470 x 4300
Living	4200 x 4300
Media	4270 x 3830
Outdoor Living	7400 x 3220
House Dimensions	
House Length	23.40m
House Width	12.75m
House Area	270.13m ² (29.08sq)

Design Options Available	
Walk-in Robe options	•
Guest Bed in lieu of Media	•
Mirror Rear	•

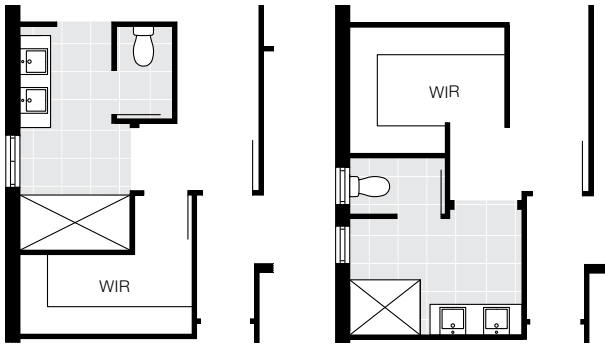
Additional costs may apply for design options.



Milan Design Options

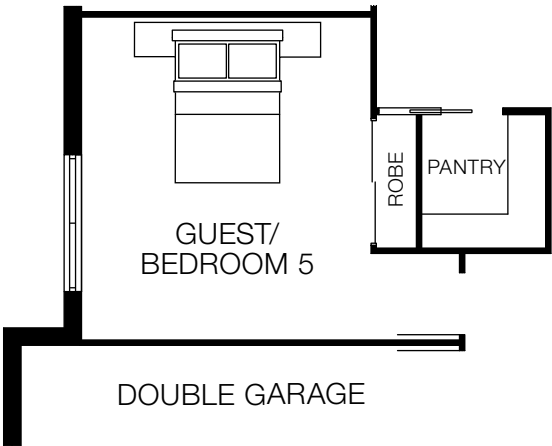
14m+ Lot Width

Walk-in Robe Options

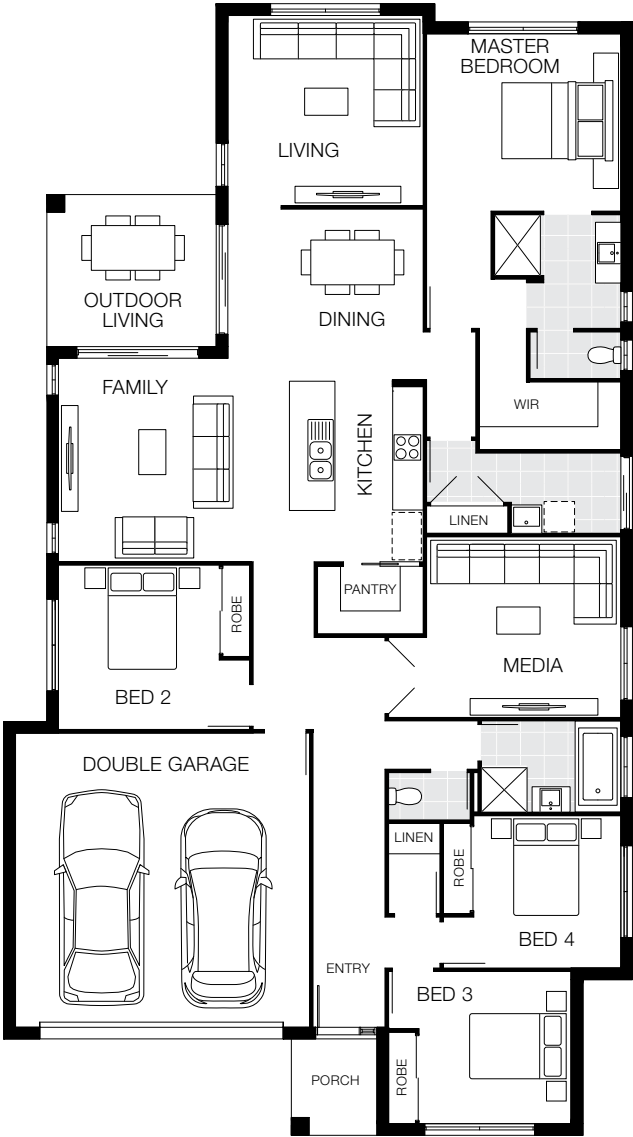


Option One Option Two

Guest Bed in lieu of Media



Mirror Rear



Floorplan based on Designer Facade. Floorplan is indicative only, conceptual in nature and subject to change. Floorplan may depict features and/or other products which are not included in the house design, not included in the house price and/or not available from Coral Homes. All measurements are in millimetres unless otherwise stated. Floorplan measurements are approximate and are not to scale. Lot width is based on Designer facade and is to be used as a guide only and may change due to developer covenants and Local Authority guidelines. ©Coral Homes Pty Ltd. The copyright in this floorplan is owned by or licensed to Coral Homes Pty Ltd and may not be reproduced, copied or dealt with in any manner which infringes the exclusive rights of Coral Homes Pty Ltd as prescribed by the Copyright Act 1968, without the express written authorisation of Coral Homes Pty Ltd.

Design Options based on Milan 29 (Mirror Rear option based on Milan 25). These options are only available on certain home designs. Floorplans are indicative only, conceptual in nature and subject to change. Floorplans may depict features and/or other products which are not included in the house design, not included in the house price and/or not available from Coral Homes. ©Coral Homes Pty Ltd. The copyright in these floorplans are owned by or licensed to Coral Homes Pty Ltd and may not be reproduced, copied or dealt with in any manner which infringes the exclusive rights of Coral Homes Pty Ltd as prescribed by the Copyright Act 1968, without the express written authorisation of Coral Homes Pty Ltd.

Milan Facade Options



Facades based on Milan 23. Facades depict items such as homewares, furniture, landscaping and fencing that are not supplied by Coral Homes. Facades are indicative only, conceptual in nature and subject to change. Facades depict non-standard fixtures, features and finishes. Additional costs for timber decking, driveway, lighting, more than one colour and deep base paints, tiles, non-standard brick and off white mortar apply.

12.5m+ Lot Width



Facades based on Milan 23. Facades depict items such as homewares, furniture, landscaping and fencing that are not supplied by Coral Homes. Facades are indicative only, conceptual in nature and subject to change. Facades depict non-standard fixtures, features and finishes. Additional costs for timber decking, driveway, lighting, more than one colour and deep base paints, tiles, non-standard brick and off white mortar apply.

Milan Facade Options



Facades based on Milan 27. Facades depict items such as homewares, furniture, landscaping and fencing that are not supplied by Coral Homes. Facades are indicative only, conceptual in nature and subject to change. Facades depict non-standard fixtures, features and finishes. Additional costs for timber decking, driveway, lighting, more than one colour and deep base paints, tiles, non-standard brick and off white mortar apply.

14m+ Lot Width



On display

Facades based on Milan 27. Facades depict items such as homewares, furniture, landscaping and fencing that are not supplied by Coral Homes. Facades are indicative only, conceptual in nature and subject to change. Facades depict non-standard fixtures, features and finishes. Additional costs for timber decking, driveway, lighting, more than one colour and deep base paints, tiles, non-standard brick and off white mortar apply.

Find Out More



Website

Want to see more of our home designs?
Head over to our website at coralhomes.com.au



Virtual Village

Not enough time to visit our displays?
Take a virtual tour at coralhomes.com.au/virtual-tours



Social

Connect with us! We update our social network
with the latest Coral Homes news and offers.

CORAL
HOMES

© Coral Homes Pty Ltd. The copyright in the floorplans and facades depicted in this brochure are owned by or licensed to Coral Homes Pty Ltd and may not be reproduced, copied or dealt with in any manner which infringes the exclusive rights of Coral Homes Pty Ltd as prescribed by the Copyright Act 1968 without the express written authorisation of Coral Homes Pty Ltd. QBCC 50792/1014053 & NSW OFT 62084C. 210701



Lisbon 32 - Harmony Display, Palmview

Photography depicts items such as homewares, furniture, landscaping, fencing and may depict items that are upgraded or not supplied by Coral Homes. Speak with your New Home Consultant for more details.

