

HUNTER HOMES

live WITH HEART 



KOSCIUSZKO FACADE

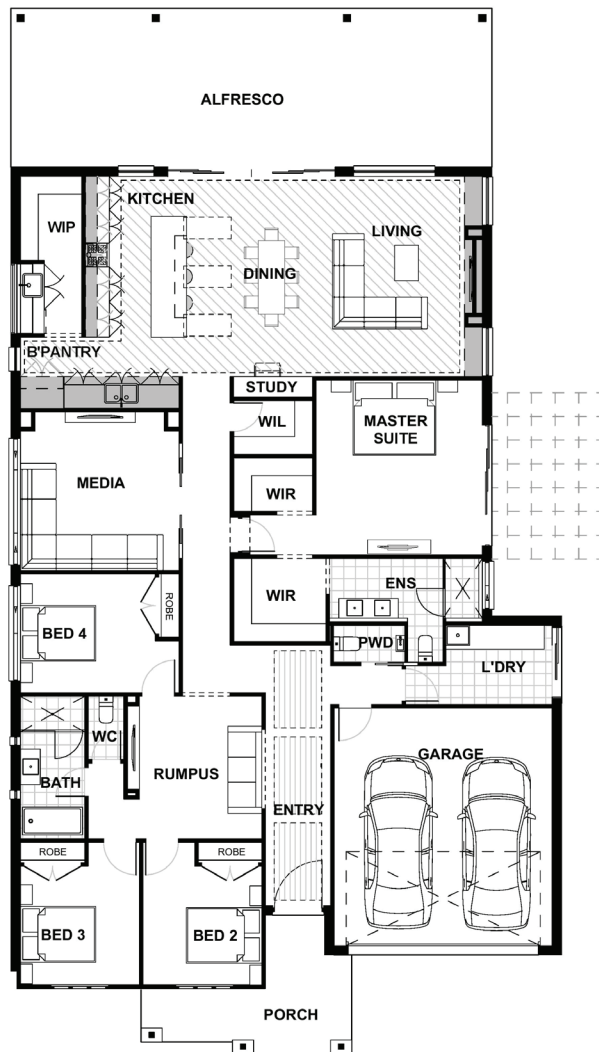
 4  2.5  2

Total (sq.s.) 34.51 Width (m) 13.9

Total (m²) 320.64 Length (m) 26.4

Description

When you open the front door to the Kenneth 276 you will automatically feel like home! This four bedroom home combines the living, dining and kitchen area that extends to the outdoors via a rear alfresco making this ideal for indoor and outdoor living. The chef style kitchen will keep any cook in the family happy combining all you need with the walk-in pantry. The master suite is centrally located within the home, offering privacy as a parents retreat. The generous his and hers robe, along with spacious ensuite, combine to provide an extra sense of luxury in this area. The three other bedrooms are in their own separate area which is located off the rumpus room. With distinctly separate living areas there is plenty of privacy for everyone to indulge in their favourite pastime; be that reading, watching movies or playing video games.



Terms and Conditions: Images shown on this brochure are approximate and for illustration purposes only, these plans may not be drawn to scale. Façades and other images on this brochure may be shown as optional upgrades or not included, additional fixtures and finishes that are featured on this document may not be included in the base cost such as landscaping, tiling, decking, furniture, feature lighting, pools, driveways etc. Hunter Homes reserves the right to change plans and inclusions at any time. All designs that are developed remain the property of Hunter Homes Pty Ltd under copyright law & we retain & claim all rights to these plans. Changing plans by 50% or more does not avoid legal responsibility for a copyright breach.

Kenneth 276

1300 BUY HOME

Potters Lane | Homeworld | Huntlee
www.hunterhomesnsw.com

love YOUR HUNTER HOME