

HUNTER HOMES

live WITH HEART 



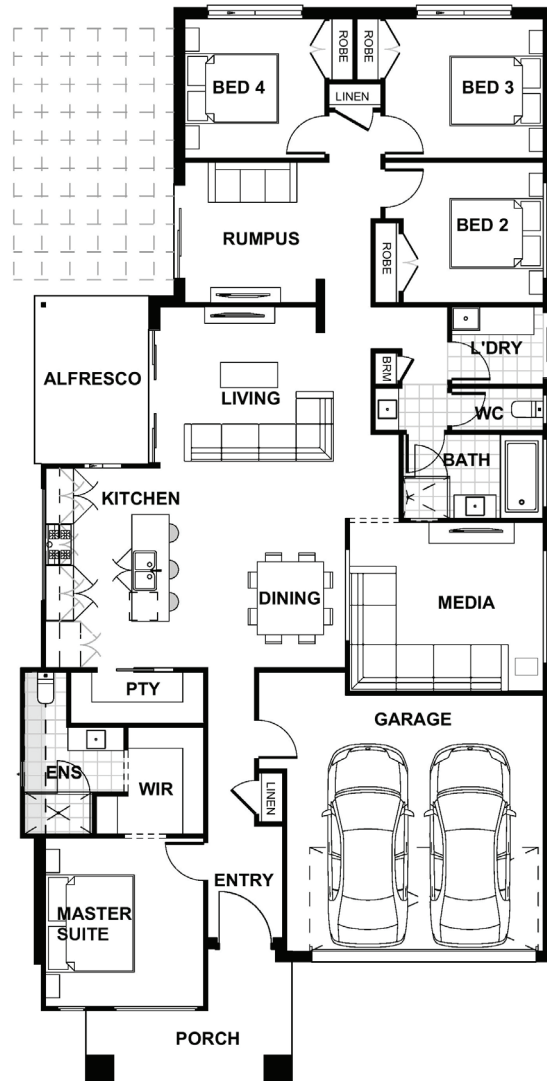
WISEMAN FACADE



Total (sq.s.)	23.96	Width (m)	11.45
Total (m ²)	222.61	Length (m)	23.1

Description

The Ellerton 223 offers various living options with a media and children's activity room, three-way bathroom along with additional storage. This home creates a unique living experience with plenty of scope for multi-functional use. A well-appointed gourmet kitchen overlooks the spacious dining and living zones, which flow generously to the airy alfresco. The master suite, complete with spacious luxury ensuite and walk-through robe, is located at the front of the home. The three remaining bedrooms are located at the rear. This is a home that will allow your family to grow in comfortably. Whether you are looking for functionality, privacy, or more living space, the Ellerton has got you covered.



Terms and Conditions: Images shown on this brochure are approximate and for illustration purposes only, these plans may not be drawn to scale. Façades and other images on this brochure may be shown as optional upgrades or not included, additional fixtures and finishes that are featured on this document may not be included in the base cost such as landscaping, tiling, decking, furniture, feature lighting, pools, driveways etc. Hunter Homes reserves the right to change plans and inclusions at any time. All designs that are developed remain the property of Hunter Homes Pty Ltd under copyright law & we retain & claim all rights to these plans. Changing plans by 50% or more does not avoid legal responsibility for a copyright breach.

Ellerton 223

1300 BUY HOME

Potters Lane | Homeworld | Huntlee
www.hunterhomesnsw.com

love YOUR HUNTER HOME