

HUNTLEE DISPLAY | 14 Peachy Avenue, North Rothbury

CANDOR *Homes*

THE OHANA 238

compass raised portico facade



THE OHANA 238



MIN BLOCK WIDTH 14m
HOUSE DEPTH 22.32m

Ohana means family. Not only blood relatives, but our friends and neighbours also. The Ohana 238 is designed with families in mind. Featuring multiple living areas and a dedicated kids zone to the rear of the home. The centrally located kitchen opens up onto a large open plan living area and alfresco area, perfect for entertaining.

With a range of upgrade options available, you can further customise The Ohana to suit your family's needs.



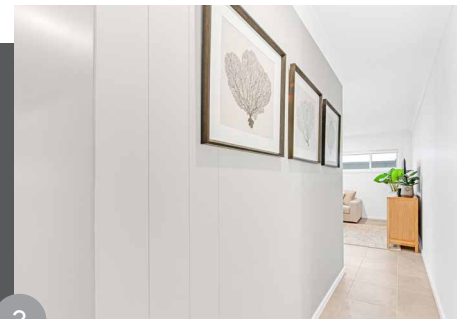
UPGRADES



- 1 Carpet to master suite, bedrooms, robes, and media room
- Plantation shutters to master bedroom (not pictured)



- 2 Vanity tile feature wall
- NKA Creative Concrete Vanity Basins
- Phoenix Teel Tapware package (1 step above standard)



- 3 Timber feature wall to hallway and pantry



- 4 20mm Smartstone Calcutta Gris Benchtops to kitchen, kitchen splashback, ensuite and vanity
- Upgraded kitchen layout including feature timber, open shelf units to overhead cupboards and island bar
- Phoenix Prize kitchen sink mixer to kitchen island bar
- Butlers pantry, including sink, tapware, upper and lower cabinetry